
Subject: brenbot 1.53 help

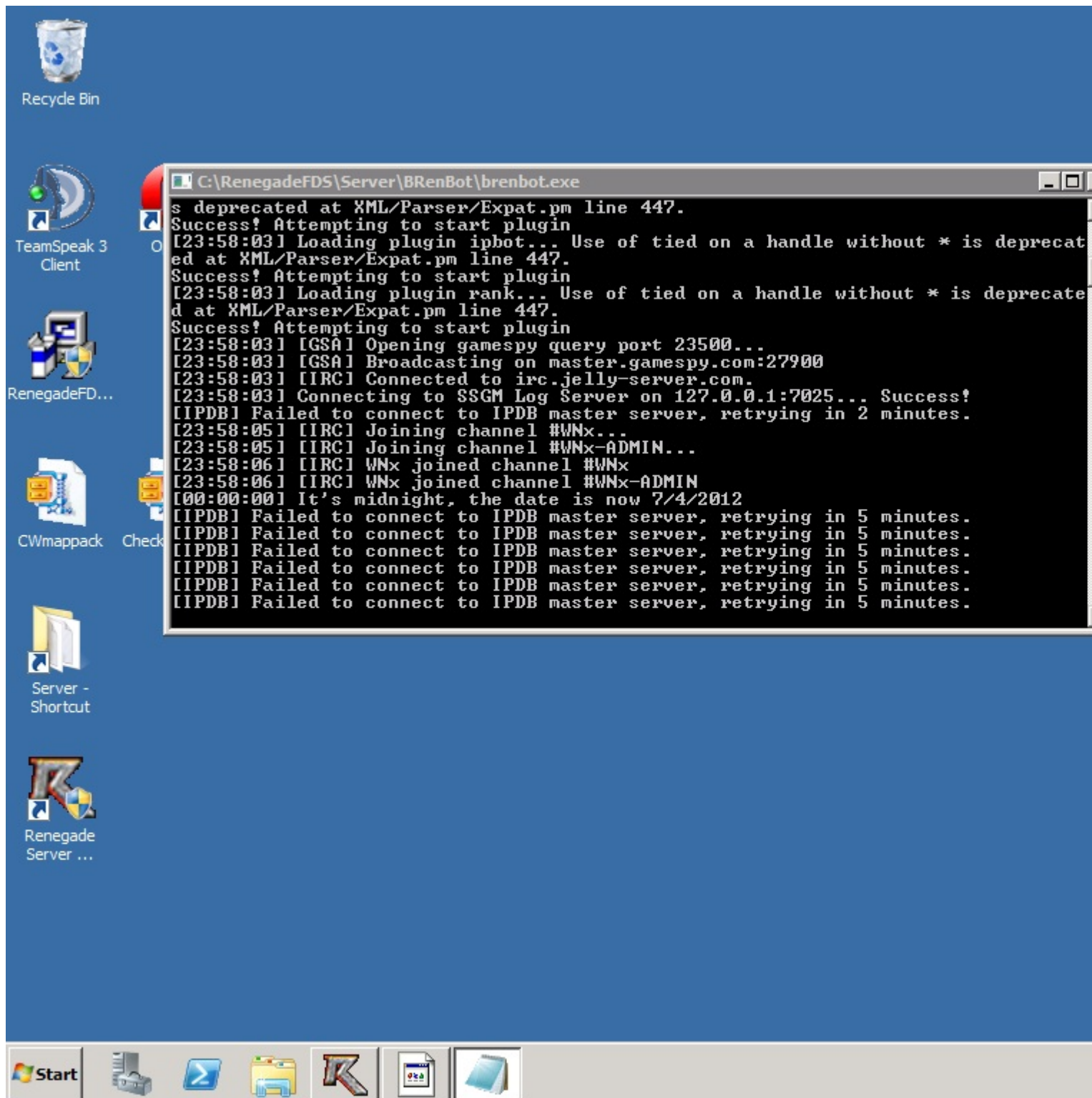
Posted by [Dr.Destr0y3r](#) on Thu, 05 Apr 2012 23:29:27 GMT

[View Forum Message](#) <> [Reply to Message](#)

eh i've asked alot of ppl and everyone says the same thing.. does anyone no how to fix this IPDB crap?

File Attachments

1) [serv.jpg](#), downloaded 1024 times



Subject: Re: brenbot 1.53 help

Posted by [Dr.Destr0y3r](#) on Fri, 06 Apr 2012 00:59:23 GMT

[View Forum Message](#) <> [Reply to Message](#)

I've got it working btw i had changed the ip inside the plugin called ipbot.pm to ipdb.danpaul88.co.uk n it connected fine.. thx wld1

Subject: Re: brenbot 1.53 help
Posted by [zunnie](#) on Wed, 11 Apr 2012 08:02:47 GMT
[View Forum Message](#) <> [Reply to Message](#)

Nice, and thanks for sharing HOW you resolved it

Subject: Re: brenbot 1.53 help
Posted by [Gen_Blacky](#) on Wed, 11 Apr 2012 15:43:43 GMT
[View Forum Message](#) <> [Reply to Message](#)

I thought the plugin on the br website was updated :/

danpaul88 wrote on Thu, 19 August 2010 00:19

Open plugins/ipbot.pm in notepad

Find & Replace

Find: ipdb.tsolutions.com

Replace: ipdb.danpaul88.co.uk

This should cause TWO replacements in the file, save and reload BRenBot. I have only recently redirected my own subdomain but the TTL is quite low so it should be up and running on that address fairly quickly.

Future IPDB plugin updates will use this address to allow me to make changes as and when required without relying on third parties.

Subject: Re: brenbot 1.53 help
Posted by [danpaul88](#) on Thu, 12 Apr 2012 10:51:20 GMT
[View Forum Message](#) <> [Reply to Message](#)

So did I... the latest release of the plugin should indeed be the updated version.
