
Subject: what button

Posted by [shippo](#) on Sat, 10 Oct 2009 01:34:55 GMT

[View Forum Message](#) <> [Reply to Message](#)

this is a very simple question

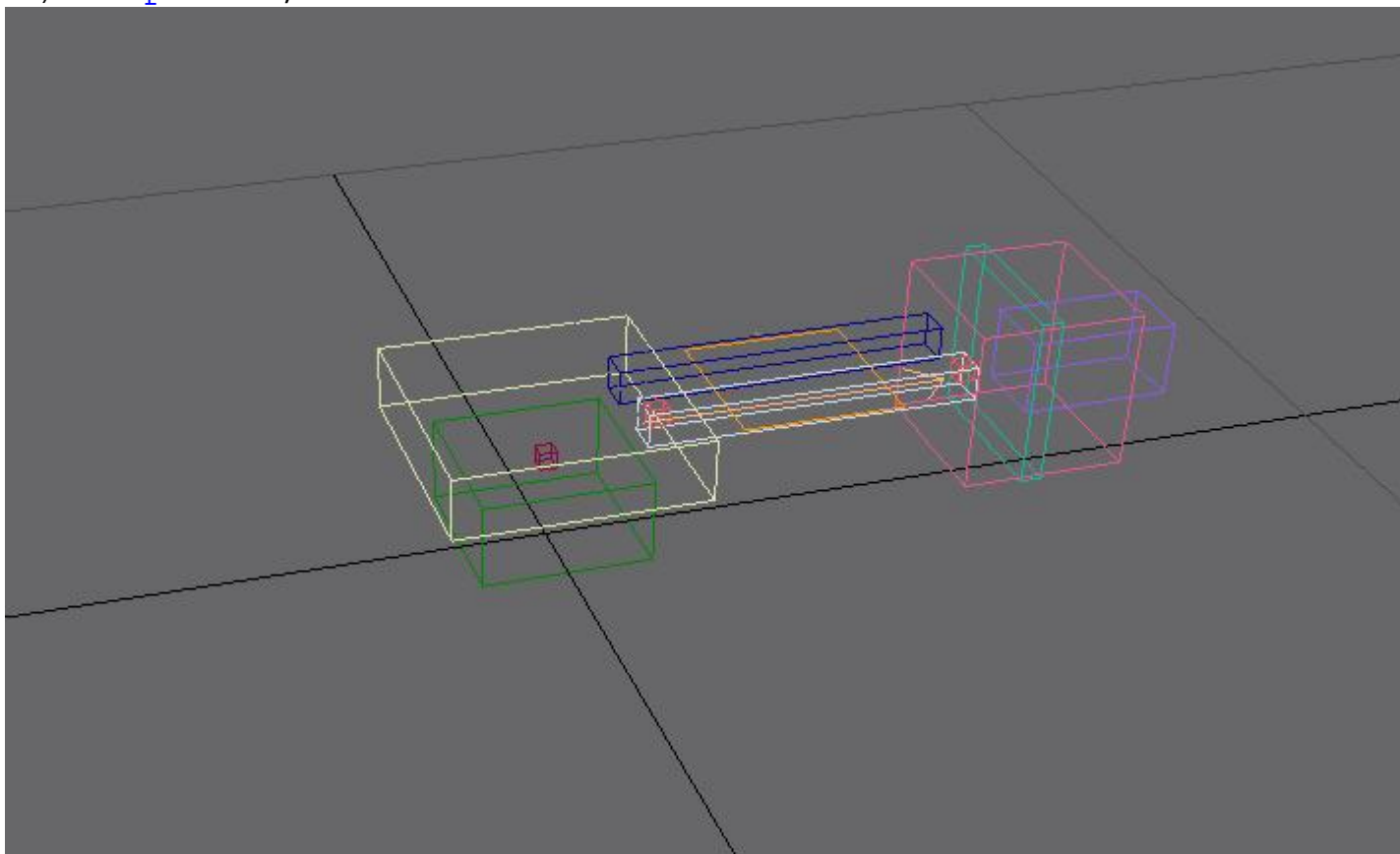
I want to see an object in grid(what ever you call it) form.
what button/key are you suppose to hit?

ex. here is my "solid" image I made in renX

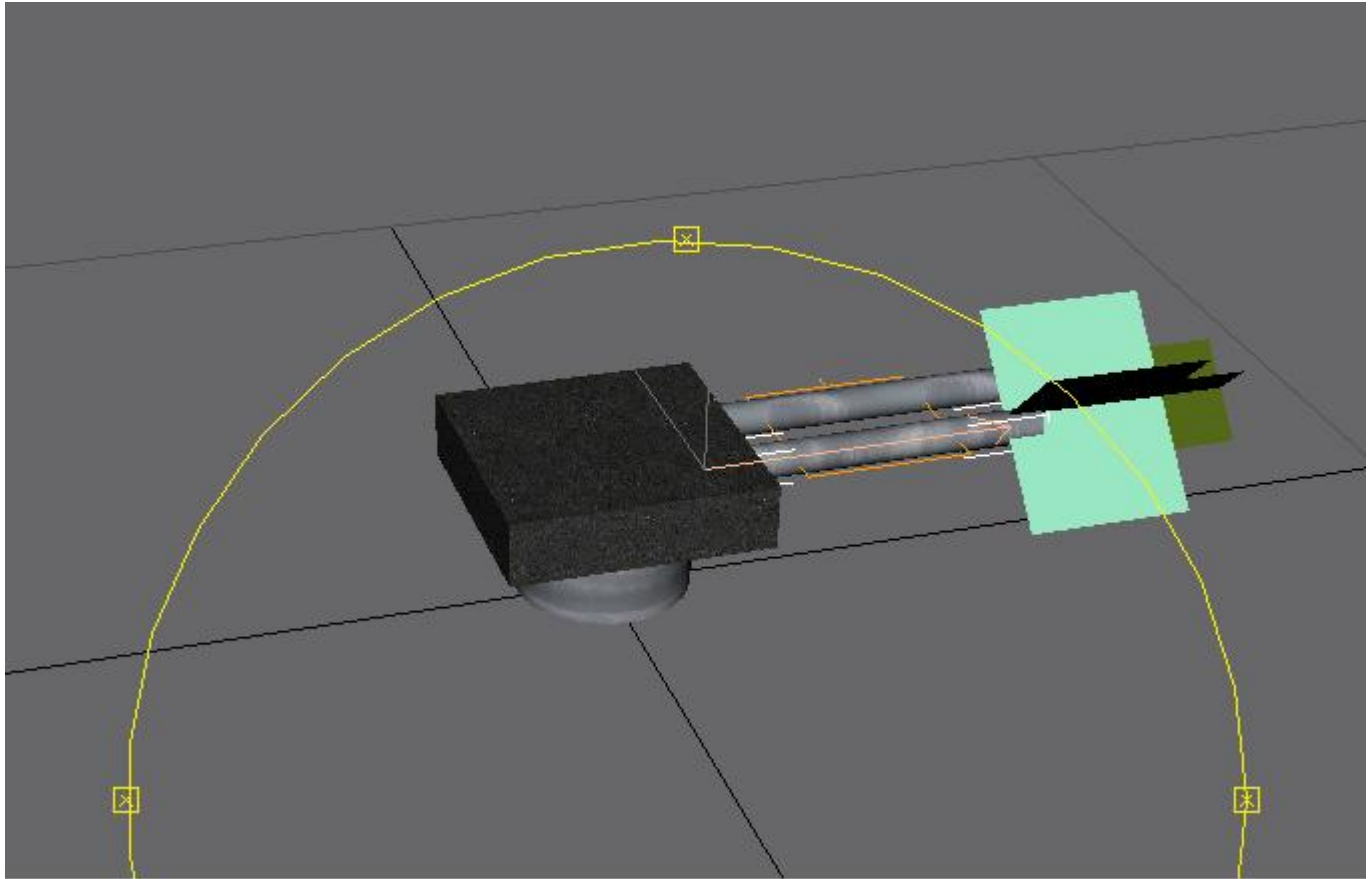
how do I do this (what do i click or push to change the solid object into this veiw)

File Attachments

1) [help2.JPG](#), downloaded 747 times



2) [help1.JPG](#), downloaded 746 times



Subject: Re: what button

Posted by [GEORGE ZIMMER](#) on Sat, 10 Oct 2009 02:32:20 GMT

[View Forum Message](#) <> [Reply to Message](#)

F3 for full wireframe mode, F4 for semi-wireframe mode (I prefer using F4).

Subject: Re: what button

Posted by [ErroR](#) on Sat, 10 Oct 2009 09:03:55 GMT

[View Forum Message](#) <> [Reply to Message](#)

right click on the perspective (if you're in perspective view ofc) and chose the same settings that ^ said