
Subject: 1 of 10000 problems with renx
Posted by [JsxKeule](#) on Mon, 07 Sep 2009 19:19:20 GMT
[View Forum Message](#) <> [Reply to Message](#)

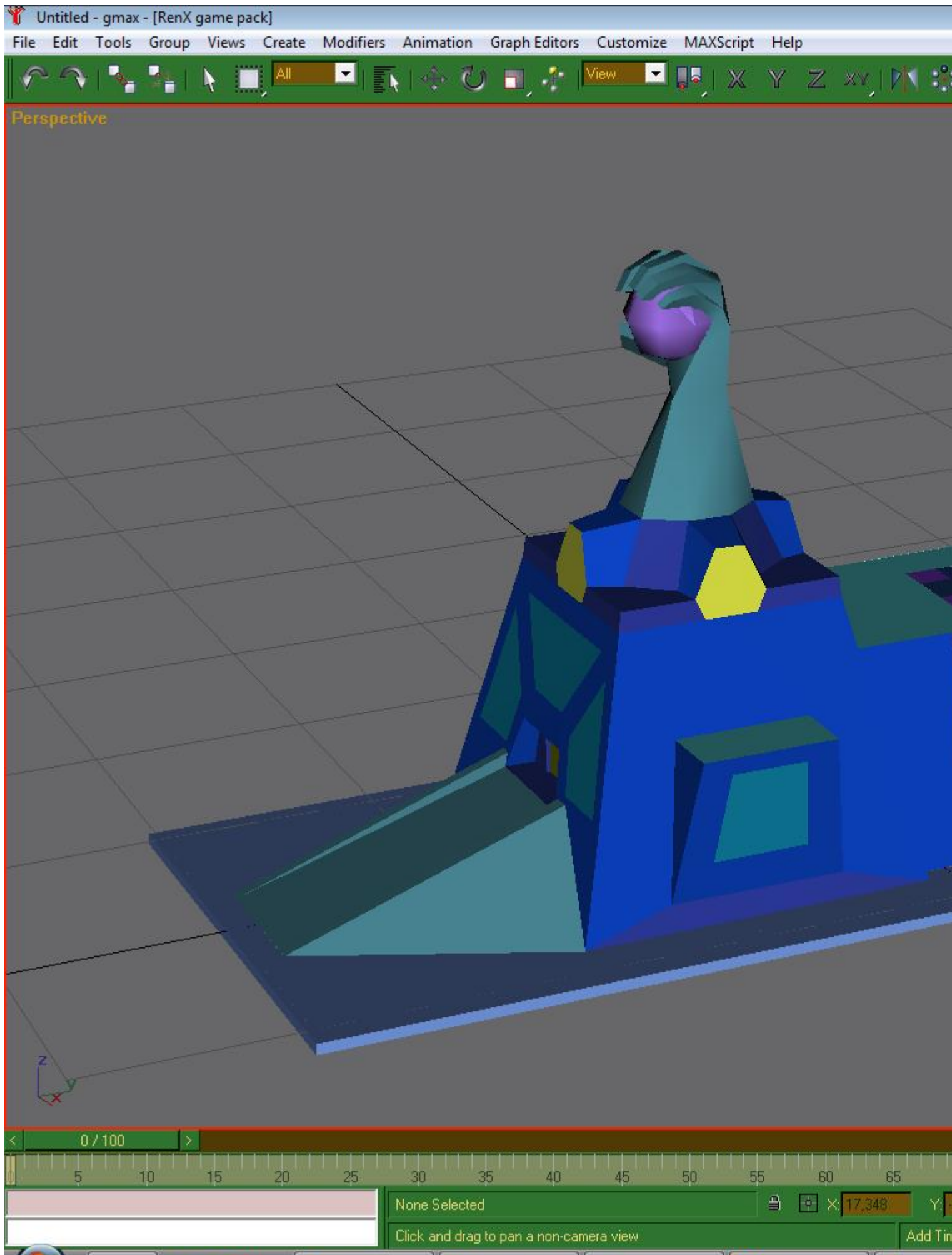
i got a very strange problem with my renx
maybe i pressed any key of my keyboard or something like this

this is when i normal look at a building

and this happens when i move the position of the camera

File Attachments

1) [renx1.jpg](#), downloaded 673 times

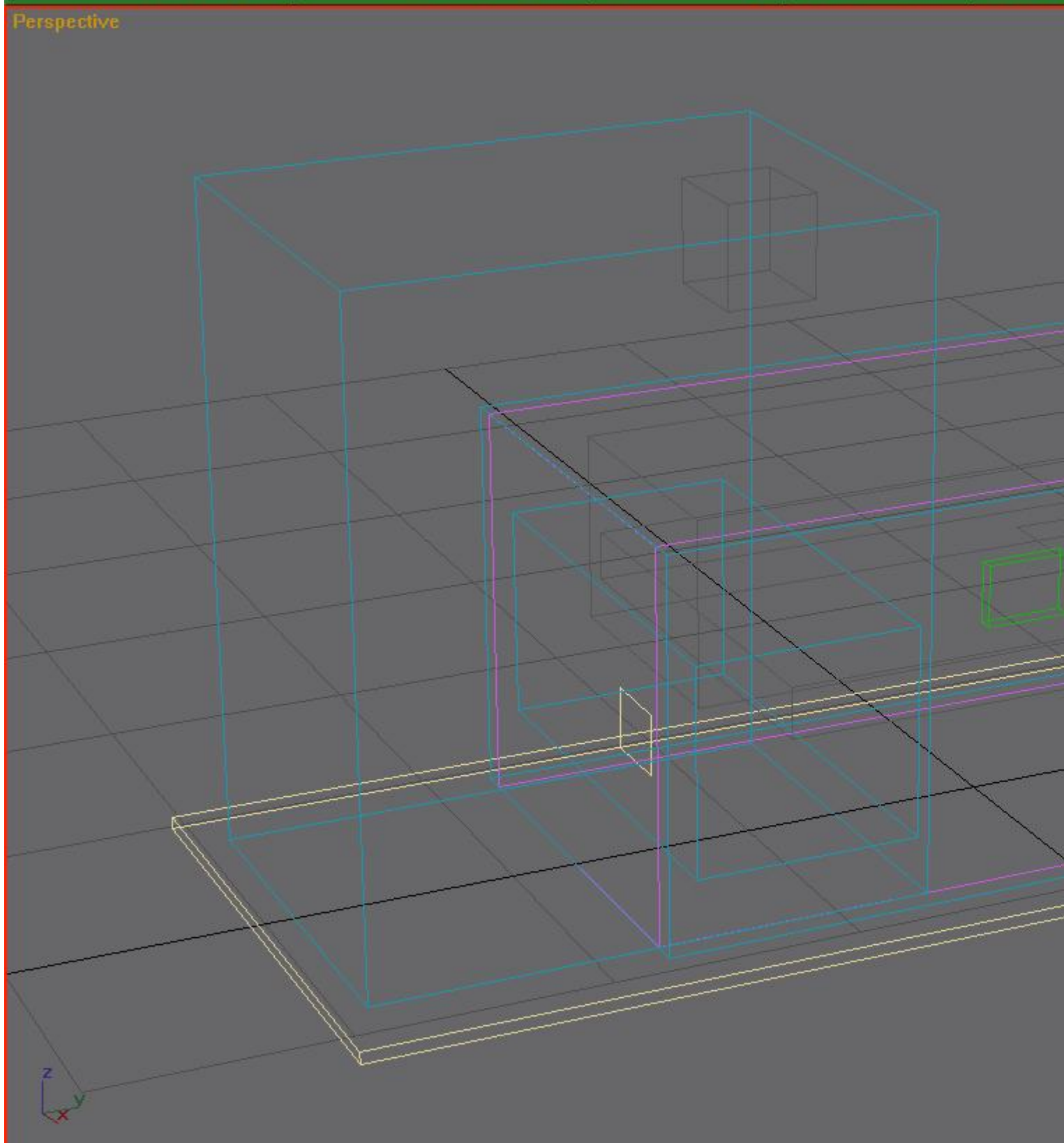


2) [renx2.jpg](#), downloaded 672 times

Untitled - gmax - [RenX game pack]

File Edit Tools Group Views Create Modifiers Animation Graph Editors Customize MAXScript Help

View X Y Z xy



< 0 / 100 >

5 10 15 20 25 30 35 40 45 50 55 60 65

None Selected

Click and drag to pan a non-camera view

7.121 Y

Add Time

Subject: Re: 1 of 10000 problems with renx
Posted by [ErroR](#) on Mon, 07 Sep 2009 19:27:54 GMT
[View Forum Message](#) <> [Reply to Message](#)

Press O

Subject: Re: 1 of 10000 problems with renx
Posted by [JsxKeule](#) on Mon, 07 Sep 2009 19:32:08 GMT
[View Forum Message](#) <> [Reply to Message](#)

omfg that was simple lol
thx for fast help^^

Subject: Re: 1 of 10000 problems with renx
Posted by [ErroR](#) on Tue, 08 Sep 2009 10:32:39 GMT
[View Forum Message](#) <> [Reply to Message](#)

np, i had that problem too, helps when editing something big, like maps tho
