

---

Subject: FDS works but server ERROR  
Posted by [cpjok](#) on Fri, 12 Dec 2008 12:29:12 GMT  
[View Forum Message](#) <> [Reply to Message](#)

---

ok i have Windows FDS and NR bot with SSGM

it works but when you try to join the server it says negotiating port with server then after 30 seconds Negotiation port failed

any ideas how to fix it

---

---

Subject: Re: FDS works but server ERROR  
Posted by [Omar007](#) on Fri, 12 Dec 2008 13:53:34 GMT  
[View Forum Message](#) <> [Reply to Message](#)

---

Looks like a firewall blocks the incoming signal (if it doesn't block outgoing also).  
Set the RenegadeServer.exe and the NR executable in the firewall allow list.

If you use a router you should check port forwarding.

---

---

Subject: Re: FDS works but server ERROR  
Posted by [cpjok](#) on Fri, 12 Dec 2008 22:07:45 GMT  
[View Forum Message](#) <> [Reply to Message](#)

---

ok i open my firewall and added them to it but it still says same thing or did you mean you router firewall?

---

---

Subject: Re: FDS works but server ERROR  
Posted by [Omar007](#) on Fri, 12 Dec 2008 22:22:19 GMT  
[View Forum Message](#) <> [Reply to Message](#)

---

Both. You should check that both allow the FDS to access Internet AND allow to receive connections. Most routers block incoming and don't block outgoing traffic.

If you added a exception in windows than the problem won't be in windows (i think).

---

---

Subject: Re: FDS works but server ERROR  
Posted by [cpjok](#) on Sat, 13 Dec 2008 02:08:32 GMT  
[View Forum Message](#) <> [Reply to Message](#)

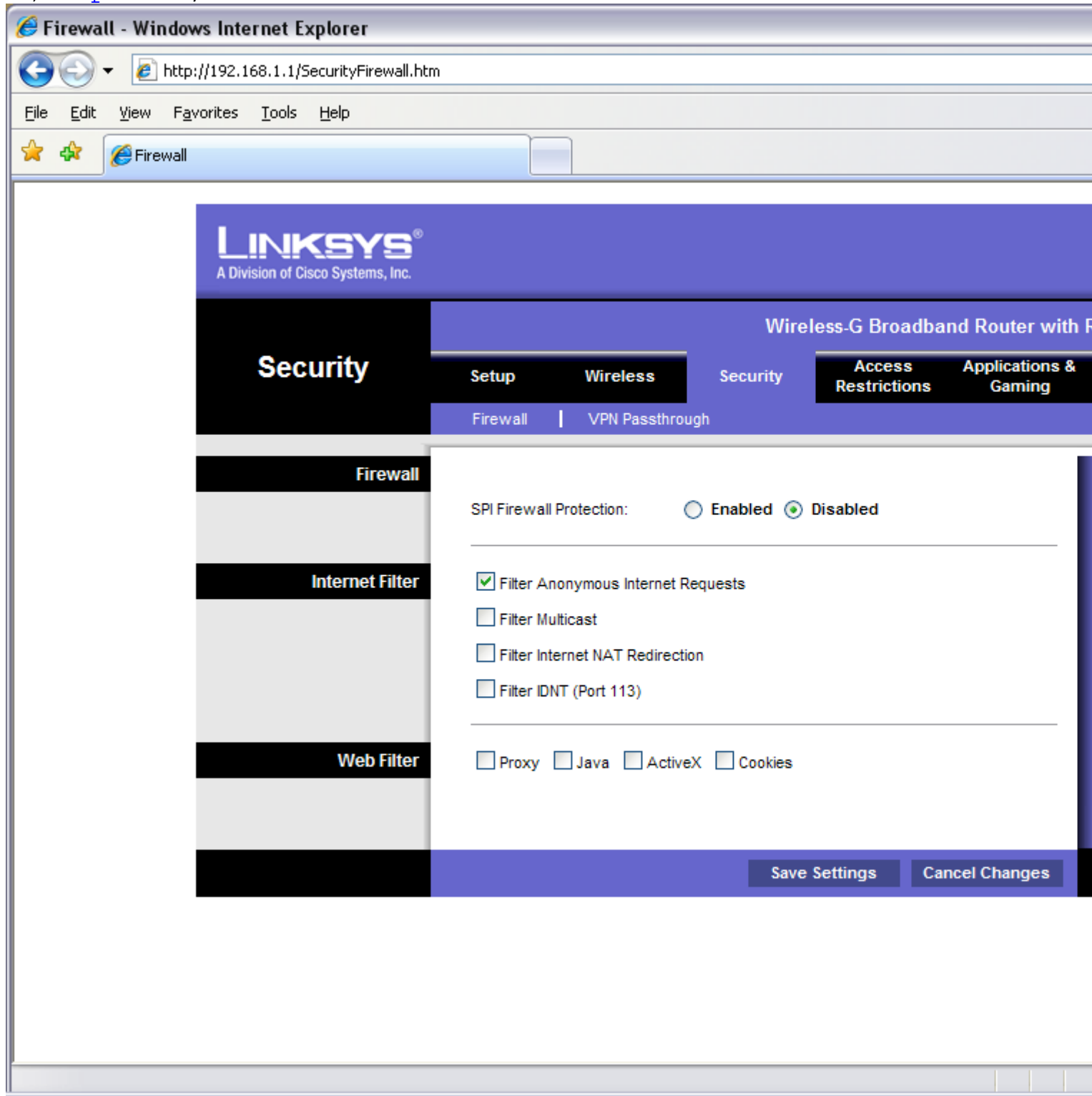
---

My router is already set as firewall disabled

---

# File Attachments

1) [nope.PNG](#), downloaded 642 times



---

Subject: Re: FDS works but server ERROR  
Posted by [Omar007](#) on Sat, 13 Dec 2008 11:08:19 GMT

[View Forum Message](#) <> [Reply to Message](#)

---

Ok than it seems not to be your firewall...

Do you run renegade and the FDS on the same PC?

Also what is the Username of the server? I could join and check if i can join

---

---

Subject: Re: FDS works but server ERROR  
Posted by [cpjok](#) on Sat, 13 Dec 2008 12:06:17 GMT

[View Forum Message](#) <> [Reply to Message](#)

---

nope its on other pc and user is BZAOW

---

---

Subject: Re: FDS works but server ERROR  
Posted by [Omar007](#) on Sat, 13 Dec 2008 12:10:27 GMT

[View Forum Message](#) <> [Reply to Message](#)

---

Gonna join now

---

---

Subject: Re: FDS works but server ERROR  
Posted by [Omar007](#) on Sat, 13 Dec 2008 12:16:19 GMT

[View Forum Message](#) <> [Reply to Message](#)

---

Weird i don't have any problem joining. I even can't see a window 'Negotiating port with server'.  
He joins so fast he skips that window

---

---

Subject: Re: FDS works but server ERROR  
Posted by [cpjok](#) on Sat, 13 Dec 2008 12:33:45 GMT

[View Forum Message](#) <> [Reply to Message](#)

---

lol so why don't it work for me

---

---

Subject: Re: FDS works but server ERROR  
Posted by [Omar007](#) on Sat, 13 Dec 2008 12:37:18 GMT

[View Forum Message](#) <> [Reply to Message](#)

---

Well im sorry but since it works normally here i really have no idea what's wrong

I hope someone else does

---

---

Subject: Re: FDS works but server ERROR  
Posted by [cpjok](#) on Sat, 13 Dec 2008 12:38:39 GMT  
[View Forum Message](#) <> [Reply to Message](#)

---

ok thanx for help BTW

i had a server ages ago but it never did that anyways thanx for help

---

Subject: Re: FDS works but server ERROR  
Posted by [Omar007](#) on Sat, 13 Dec 2008 12:42:19 GMT  
[View Forum Message](#) <> [Reply to Message](#)

---

You're welcome

---

Subject: Re: FDS works but server ERROR  
Posted by [ExEric3](#) on Sat, 13 Dec 2008 19:49:31 GMT  
[View Forum Message](#) <> [Reply to Message](#)

---

Is your IP public?

---

Subject: Re: FDS works but server ERROR  
Posted by [cpjok](#) on Mon, 15 Dec 2008 21:47:46 GMT  
[View Forum Message](#) <> [Reply to Message](#)

---

im not sure

---

Subject: Re: FDS works but server ERROR  
Posted by [rhuarc](#) on Sun, 21 Dec 2008 07:56:35 GMT  
[View Forum Message](#) <> [Reply to Message](#)

---

if its the same network, use the 'servers' internal ip..

---