
Subject: NightRegulator PLEASE HELP

Posted by [nodmanmik](#) on Tue, 22 Apr 2008 12:24:13 GMT

[View Forum Message](#) <> [Reply to Message](#)

ok here we go!

i have nightregualtor and when a player joins the game this irc message pops up! :-

[NR] ERROR: - NightRegulator v0.3.5 BETA 8i Debugger - ERROR ENCOUNTERED - DETAILS:
"Run-Time error 9 has occurred! Subscript out of range", IN FILE: "NightRegulator.exe --
RENLOG PARSEING"

how can i fix this??

Subject: Re: NightRegulator PLEASE HELP

Posted by [Nightma12](#) on Tue, 22 Apr 2008 20:01:21 GMT

[View Forum Message](#) <> [Reply to Message](#)

and what does it say in admin channel?

Subject: Re: NightRegulator PLEASE HELP

Posted by [nodmanmik](#) on Fri, 25 Apr 2008 12:57:55 GMT

[View Forum Message](#) <> [Reply to Message](#)

lol that is what it says whenever someone joins the game! it only appears in the admin channel but otherwise NR is good

i know your the owner of NR good job mate!

also

where can i find the global ban/mod directory??

Subject: Re: NightRegulator PLEASE HELP

Posted by [PsuFan](#) on Fri, 25 Apr 2008 13:07:59 GMT

[View Forum Message](#) <> [Reply to Message](#)

Global ban/mod directory is only if you have two servers on the same computer and two NR. In this case, you could set up the second NR to use the first NR's directory so it would take its bans and mod list.

Subject: Re: NightRegulator PLEASE HELP
Posted by [nodmanmik](#) on Fri, 25 Apr 2008 13:17:58 GMT
[View Forum Message](#) <> [Reply to Message](#)

Imao ohh i get it now..

thought it was a global ban list for all NR serves (maybe a Suggestion??) then more servers will be more secure towards Cheaters etc..

Subject: Re: NightRegulator PLEASE HELP
Posted by [PsuFan](#) on Fri, 25 Apr 2008 14:59:51 GMT
[View Forum Message](#) <> [Reply to Message](#)

There is a global ban list, Last time I checked there was no one on it.

Subject: Re: NightRegulator PLEASE HELP
Posted by [nodmanmik](#) on Fri, 25 Apr 2008 18:52:45 GMT
[View Forum Message](#) <> [Reply to Message](#)

no what i mean is that all NR make a connection to a NR database which stores all BANS automatically as they are given but as a built-in function.

sound good?

Subject: Re: NightRegulator PLEASE HELP
Posted by [PsuFan](#) on Sat, 26 Apr 2008 14:00:09 GMT
[View Forum Message](#) <> [Reply to Message](#)

No it doesnt. I dont want some stupid host banning everyone and then it being added to a global NR database.

Subject: Re: NightRegulator PLEASE HELP
Posted by [nodmanmik](#) on Sat, 26 Apr 2008 16:08:16 GMT
[View Forum Message](#) <> [Reply to Message](#)

lol just a suggestion.. but nevermind

or it could automatically input bans made my BIATCH? then stupid hosts cant ban someone "globally"

Subject: Re: NightRegulator PLEASE HELP
Posted by [Goztow](#) on Sat, 26 Apr 2008 17:37:04 GMT
[View Forum Message](#) <> [Reply to Message](#)

The whole global ban list idea has been discussed several times in the server owners subforum. If it was as easy at it looks, it would already have been done .

Subject: Re: NightRegulator PLEASE HELP
Posted by [PsuFan](#) on Sat, 26 Apr 2008 19:02:25 GMT
[View Forum Message](#) <> [Reply to Message](#)

yeah i don't trust other hosts. There only banned from my server if they get banned in it. I'm sure others feel the same way.

Subject: Re: NightRegulator PLEASE HELP
Posted by [danpaul88](#) on Sat, 26 Apr 2008 19:36:02 GMT
[View Forum Message](#) <> [Reply to Message](#)

^ Exactly. Which is why discussions for a global ban system have always fallen through.

Subject: Re: NightRegulator PLEASE HELP
Posted by [Nightma12](#) on Sat, 26 Apr 2008 20:40:01 GMT
[View Forum Message](#) <> [Reply to Message](#)

There is a global ban system built into NR that can be enabled on the config, it was added during the heat of the "global ban list talks"

However there is nobody on it, and i dont plan to add anybody on it.

Subject: Re: NightRegulator PLEASE HELP
Posted by [nodmanmik](#) on Sat, 26 Apr 2008 21:16:02 GMT
[View Forum Message](#) <> [Reply to Message](#)

but it could make the renegade community more secure towards cheaters and hackers..

nightmar12 just think it though.. it could be a breakthrough and maybe BR will follow if it does become a sucess!!

Subject: Re: NightRegulator PLEASE HELP
Posted by [PsuFan](#) on Sun, 27 Apr 2008 03:53:37 GMT

[View Forum Message](#) <> [Reply to Message](#)

Trust. People wont like it. Especially because server owners have to ban on instinct now.

Subject: Re: NightRegulator PLEASE HELP
Posted by [Lone0001](#) on Sun, 27 Apr 2008 03:58:02 GMT
[View Forum Message](#) <> [Reply to Message](#)

Well instead of a global ban list you could do a global Warn list when a person joins it will say "<name> is a suspected cheater" or not.

Subject: Re: NightRegulator PLEASE HELP
Posted by [danpaul88](#) on Sun, 27 Apr 2008 10:23:51 GMT
[View Forum Message](#) <> [Reply to Message](#)

That was something I considered for the IPDB, again not everyone could agree who should say who was suspected or not...

Subject: Re: NightRegulator PLEASE HELP
Posted by [Goztow](#) on Sun, 27 Apr 2008 10:44:14 GMT
[View Forum Message](#) <> [Reply to Message](#)

I think we could have gotten to an agreement, Dan. The discussion just suddenly stopped. :-s

Subject: Re: NightRegulator PLEASE HELP
Posted by [danpaul88](#) on Sun, 27 Apr 2008 10:47:01 GMT
[View Forum Message](#) <> [Reply to Message](#)

Which indicates a lack of interest in it

Subject: Re: NightRegulator PLEASE HELP
Posted by [nodmanmik](#) on Sun, 27 Apr 2008 13:35:47 GMT
[View Forum Message](#) <> [Reply to Message](#)

the global "warn" list sounds good i guess...

but it would have to be a command for Admins and Over! (people who know what they are doing)..

as i said things like this if sucessful are going to attract interest [breakthrough for NR?]

Subject: Re: NightRegulator PLEASE HELP
Posted by [Lone0001](#) on Sun, 27 Apr 2008 14:14:11 GMT
[View Forum Message](#) <> [Reply to Message](#)

It wouldn't so much be global if it was just put on NR not many use it.

Subject: Re: NightRegulator PLEASE HELP
Posted by [danpaul88](#) on Sun, 27 Apr 2008 15:08:56 GMT
[View Forum Message](#) <> [Reply to Message](#)

When it was last discussed we talked about making it part of the IPDB that both BR and NR share. This solution would also be the quickest and easiest to setup as most of the structure is already in place. But, as mentioned before, the question of who decides whom to place on the list is the main problem.

Subject: Re: NightRegulator PLEASE HELP
Posted by [nodmanmik](#) on Sun, 27 Apr 2008 16:08:03 GMT
[View Forum Message](#) <> [Reply to Message](#)

biatch and server owners/admin...
well maybe just server owners..

but yes a good question.. best bet is biatch.. i guess

Subject: Re: NightRegulator PLEASE HELP
Posted by [PsuFan](#) on Mon, 28 Apr 2008 02:29:38 GMT
[View Forum Message](#) <> [Reply to Message](#)

Even biatch lies due to lag, etc.

Subject: Re: NightRegulator PLEASE HELP
Posted by [Goztow](#) on Mon, 28 Apr 2008 06:37:04 GMT
[View Forum Message](#) <> [Reply to Message](#)

PsuFan wrote on Mon, 28 April 2008 04:29 Even biatch lies due to lag, etc.
Not for the auto bans. Only for PT hack.

Subject: Re: NightRegulator PLEASE HELP
Posted by [nodmanmik](#) on Mon, 28 Apr 2008 15:13:30 GMT
[View Forum Message](#) <> [Reply to Message](#)

well then isnt it sort of agreed that biatch is the answer for now?

also PSUFAN? are you the creator of the pluginfor NR?

if so can you help me?

Subject: Re: NightRegulator PLEASE HELP
Posted by [PsuFan](#) on Mon, 28 Apr 2008 15:17:16 GMT
[View Forum Message](#) <> [Reply to Message](#)

Ahh yes I have made a plugin, dont know if thats the one your talking about.

Subject: Re: NightRegulator PLEASE HELP
Posted by [nodmanmik](#) on Mon, 28 Apr 2008 15:18:10 GMT
[View Forum Message](#) <> [Reply to Message](#)

lol the plugin which includes the [playerjoin] + [playerleave]
[also has the ran string table and ignored commands]

if so then i cant get the [player join] + [player leave] sounds to work or messages... the thing just doesnt wanna work

Subject: Re: NightRegulator PLEASE HELP
Posted by [Lone0001](#) on Mon, 28 Apr 2008 16:02:51 GMT
[View Forum Message](#) <> [Reply to Message](#)

Well actually the problem with biatch is a lot of servers are modded these days which causes biatch to go crazy so people don't use it, at least that is what I'm hearing about it with modded servers.

Subject: Re: NightRegulator PLEASE HELP
Posted by [nodmanmik](#) on Mon, 28 Apr 2008 16:52:25 GMT
[View Forum Message](#) <> [Reply to Message](#)

lol well un modded servers... make an option asking if its modded... if checked it doesnt connect to the "NRBan" database...

Subject: Re: NightRegulator PLEASE HELP
Posted by [PsuFan](#) on Mon, 28 Apr 2008 18:41:16 GMT
[View Forum Message](#) <> [Reply to Message](#)

Biatch doesnt care, It wont affect NR sending text or sounds.

But I do hope you have loaded the plugin into NR and you clicked load plugin and are not editing plugin.bnr. Your not supposed to edit that by hand. If NR works and the plugin doesnt, Read the directions that came with the plugin to make sure you installed it correctly and are adding commands correctly.

Subject: Re: NightRegulator PLEASE HELP
Posted by [nodmanmik](#) on Tue, 13 May 2008 18:20:14 GMT
[View Forum Message](#) <> [Reply to Message](#)

PsuFan wrote on Mon, 28 April 2008 13:41Biatch doesnt care, It wont affect NR sending text or sounds.

But I do hope you have loaded the plugin into NR and you clicked load plugin and are not editing plugin.bnr. Your not supposed to edit that by hand. If NR works and the plugin doesnt, Read the directions that came with the plugin to make sure you installed it correctly and are adding commands correctly.

lol what that gota do with the NR database lol....

i cant remember how i installed it but.. i am editing the the plugin from NR! every other part of the plugin works!

Subject: Re: NightRegulator PLEASE HELP
Posted by [PsuFan](#) on Wed, 14 May 2008 02:21:12 GMT
[View Forum Message](#) <> [Reply to Message](#)

Only the join & leave doesnt work? What NR version are you using so I can try on my computer.

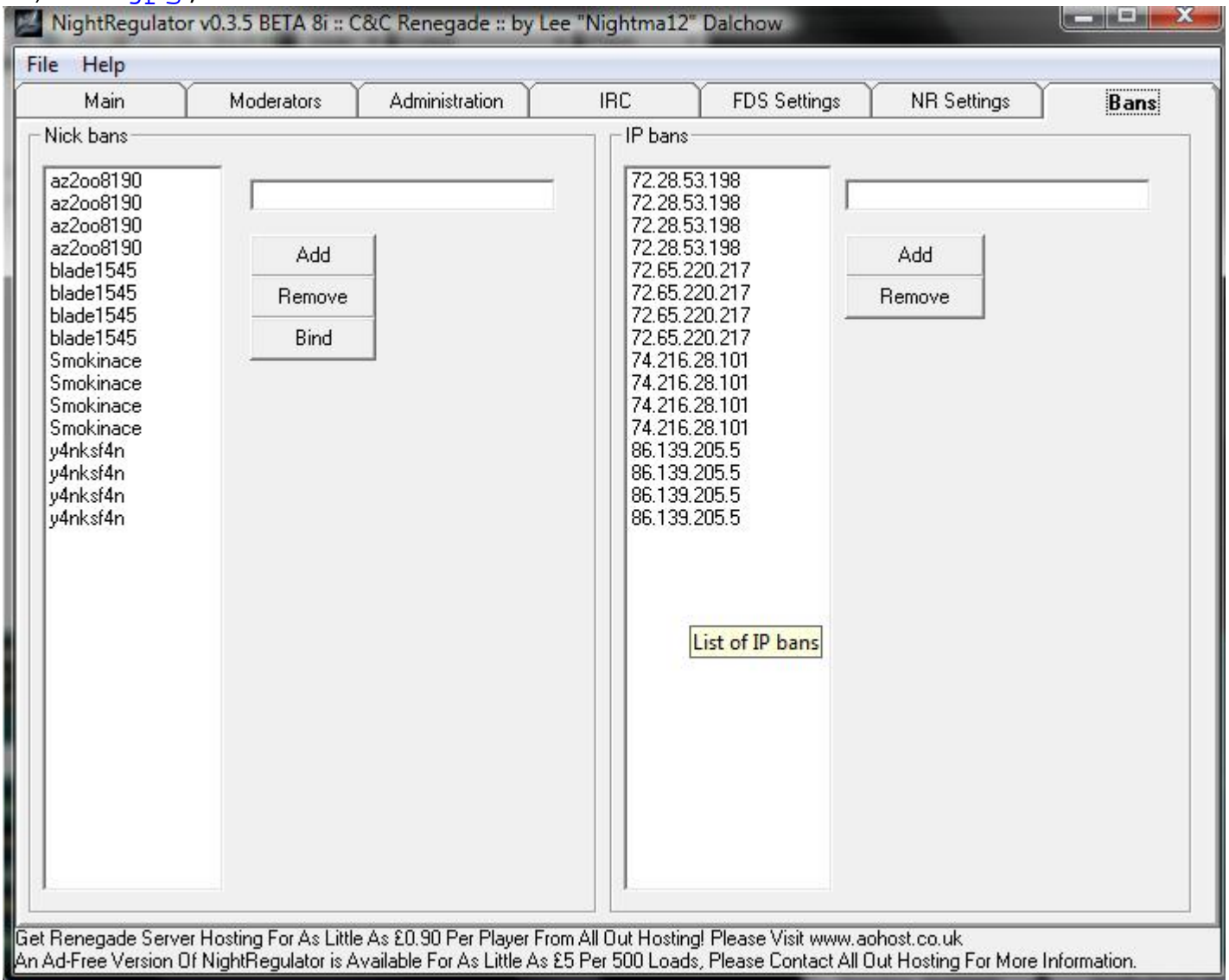
Subject: Re: NightRegulator PLEASE HELP
Posted by [nodmanmik](#) on Wed, 14 May 2008 20:48:34 GMT
[View Forum Message](#) <> [Reply to Message](#)

im using 8i

oh and why does NR duplicate stuff?
e.g Foul Language words [censor] also on the bans... ill post a ss for it!

File Attachments

1) [ss.jpg](#), downloaded 132 times



Subject: Re: NightRegulator PLEASE HELP

Posted by [nodmanmik](#) on Wed, 14 May 2008 20:56:48 GMT

[View Forum Message](#) <> [Reply to Message](#)

this is the censor words ss ... only 1 attachment per reply

File Attachments

1) [ss2.jpg](#), downloaded 139 times

Censor settings <input type="radio"/> Kick when censored word is said <input type="radio"/> Warn when censored word is said <input checked="" type="radio"/> Do nothing	Type of kick (only valid if censor settings are set to kick) <input type="radio"/> Permanent ban when kicked for saying censored word <input type="radio"/> Ban when kicked for saying censored word for <input type="text" value="1"/> hours <input checked="" type="radio"/> Qkick when kicked for saying censored word	Censored words wanker wanker wanker wanker wanker wanker wanker wanker wanker wanker wanker wanker wanker wanker wanker
Add a censored word		
<input type="text"/>	<input type="button" value="Add"/>	<input type="button" value="Remove"/>
Custom kick reason	<input "="" type="text" value="Getting 3 Swearing Warns!"/>	
Custom warn reason	<input type="text" value="Foul Language NDT Tolerated!"/>	

Get Renegade Server Hosting For As Little As £0.90 Per Player From All Out Hosting! Please Visit www.aohost.co.uk
An Ad-Free Version Of NightRegulator is Available For As Little As £5 Per 500 Loads, Please Contact All Out Hosting For More Information.

Subject: Re: NightRegulator PLEASE HELP
Posted by [PsuFan](#) on Wed, 14 May 2008 21:11:17 GMT
[View Forum Message](#) <> [Reply to Message](#)

I sent you a PM on where you should send your NR.

Subject: Re: NightRegulator PLEASE HELP
Posted by [arrow](#) on Wed, 04 Jun 2008 01:04:44 GMT
[View Forum Message](#) <> [Reply to Message](#)

so about what we were talking about before what do you do about that message that pops up it does on mine to is there a way to fix it. another thing is when i connect to fds with nr it wont connect my server wont let me use any of the commands for it. PLZ HELP

Subject: Re: NightRegulator PLEASE HELP
Posted by [arrow](#) on Wed, 04 Jun 2008 01:16:14 GMT
[View Forum Message](#) <> [Reply to Message](#)

also when you say something there are hyper texts at the end of them all the one that says nr plugins it won't let me download it is it anywhere else or can you fix it so i can.

Subject: Re: NightRegulator PLEASE HELP

Posted by [arrow](#) on Wed, 04 Jun 2008 01:17:48 GMT

[View Forum Message](#) <> [Reply to Message](#)

arrow wrote on Tue, 03 June 2008 20:04so about what we were talking about before what do you do about that message that pops up it does on mine to is there a way to fix it. another thing is when i connect to fds with nr it wont connect my server wont let me use any of the commands for it.
PLZ HELP
to psufan

Subject: Re: NightRegulator PLEASE HELP

Posted by [PsuFan](#) on Wed, 04 Jun 2008 02:43:07 GMT

[View Forum Message](#) <> [Reply to Message](#)

Sorry you are very confusing can you be more specific? And I know this forum isnt well moderated but try to refrain from posting three times in a row.

Quote:that message that pops up
What message?

Quote:nr it wont connect my server wont let me use any of the commands
What does it do? Any Errors? Make sure your FDS path is correct in NR.

Quote:hyper texts at the end of them all the one that says nr plugins it won't let me download it is it anywhere else
I have no idea at all what your talking about.

Subject: Re: NightRegulator PLEASE HELP

Posted by [arrow](#) on Wed, 04 Jun 2008 14:34:56 GMT

[View Forum Message](#) <> [Reply to Message](#)

[NR] ERROR: - NightRegulator v0.3.5 BETA 8i Debugger - ERROR ENCOUNTERED - DETAILS: "Run-Time error 9 has occurred! Subscript out of range", IN FILE: "NightRegulator.exe -- RENLOG PARSEING"

This is the message that comes on when i start nightregulator it shows up everywhere not just in the admin irc and do you know what to do to fix this.

Subject: Re: NightRegulator PLEASE HELP

Posted by [arrow](#) on Wed, 04 Jun 2008 14:42:15 GMT

[View Forum Message](#) <> [Reply to Message](#)

the hyper text i am talking about. when you post a reply on the botom of your post it has the hyper text they say: FDS|scripts.dll|SSGM|BIATCH|NIGHT REGULATOR|NR PLUGIN|. there are more but the one that won't let me download when i go to it is the NR PLUGIN i go to it and click to

download it but it doesn't show the box for me to download it. also since i don't have the plugin would that make NR not connect to my server.

Subject: Re: NightRegulator PLEASE HELP
Posted by [Nightma12](#) on Wed, 04 Jun 2008 15:01:29 GMT
[View Forum Message](#) <> [Reply to Message](#)

admin irc channel

Error occured on line:

what line?

Subject: Re: NightRegulator PLEASE HELP
Posted by [arrow](#) on Wed, 04 Jun 2008 15:02:34 GMT
[View Forum Message](#) <> [Reply to Message](#)

i have no idea what it means thats what i want to know.

Subject: Re: NightRegulator PLEASE HELP
Posted by [Nightma12](#) on Wed, 04 Jun 2008 17:48:10 GMT
[View Forum Message](#) <> [Reply to Message](#)

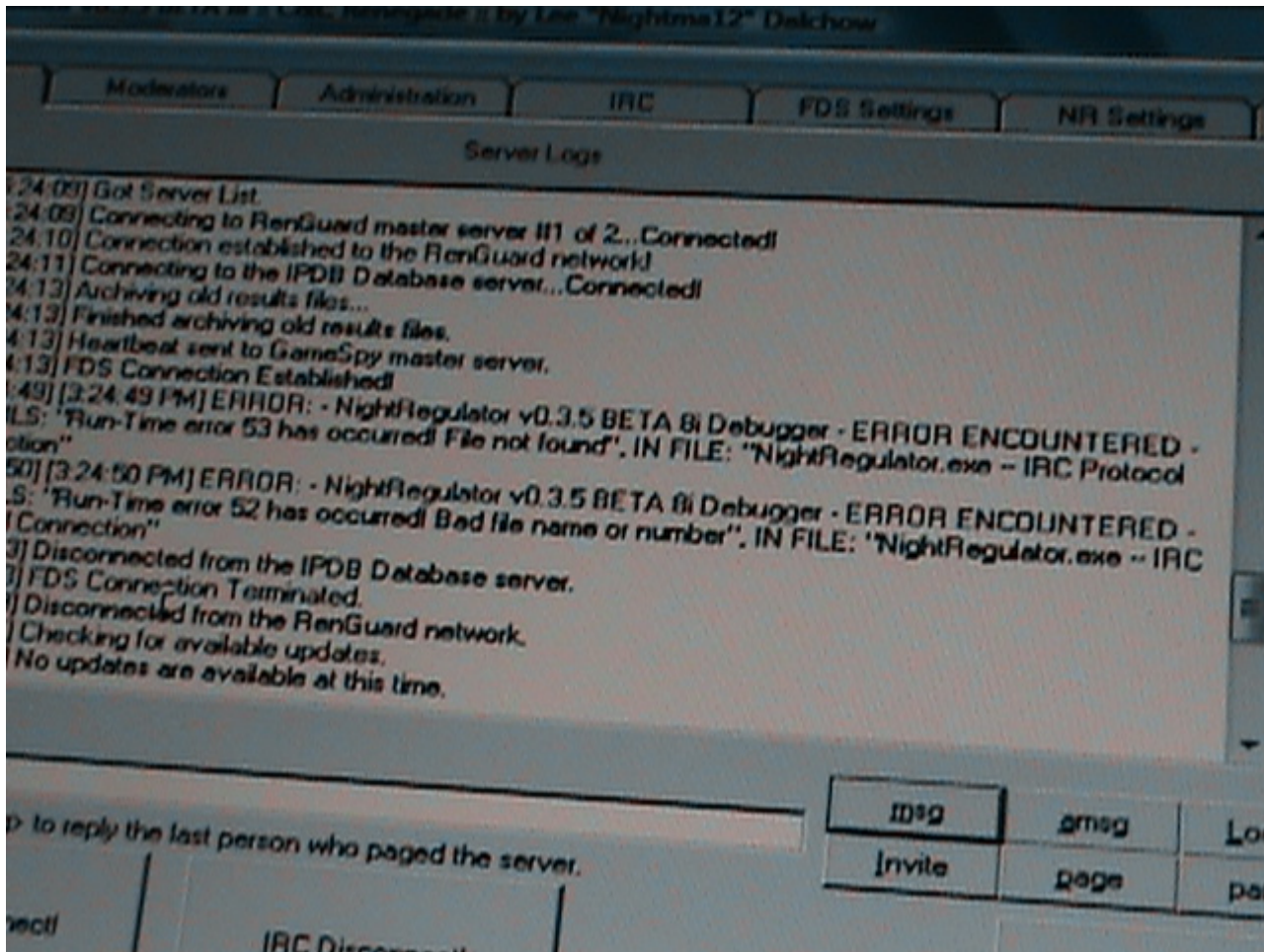
there will be a message in your admin channel saying the line it was caused on

Subject: Re: NightRegulator PLEASE HELP
Posted by [arrow](#) on Wed, 04 Jun 2008 19:46:48 GMT
[View Forum Message](#) <> [Reply to Message](#)

ok and also it comes up in the box on nightregulator.

File Attachments

1) [NR-13.jpg](#), downloaded 126 times



Subject: Re: NightRegulator PLEASE HELP
Posted by [Nightma12](#) on Wed, 04 Jun 2008 20:17:11 GMT
[View Forum Message](#) <> [Reply to Message](#)

Nightma12 wrote on Wed, 04 June 2008 10:01admin irc channel

Error occured on line:

what line?

Subject: Re: NightRegulator PLEASE HELP
Posted by [PsuFan](#) on Wed, 04 Jun 2008 22:17:45 GMT
[View Forum Message](#) <> [Reply to Message](#)

arrow wrote on Wed, 04 June 2008 09:42the hyper text i am talking about. when you post a reply on the botom of your post it has the hyper text they say: FDS|scripts.dll|SSGM|BIATCH|NIGHT

REGULATOR|NR PLUGIN|. there are more but the one that won't let me download when i go to it is the NR PLUGIN i go to it and click to download it but it doesn't show the box for me to download it. also since i don't have the plugin would that make NR not connect to my server.

No it doesnt have anything to do with NR not connecting to your server. I sent a pm.

Subject: Re: NightRegulator PLEASE HELP
Posted by [arrow](#) on Wed, 04 Jun 2008 22:58:15 GMT
[View Forum Message](#) <> [Reply to Message](#)

why did that pm let me download it but i can't click it and download it can you also pm me with the tool manager and ssgm plz and thanks. also then why won't it connect

Subject: Re: NightRegulator PLEASE HELP
Posted by [Nightma12](#) on Wed, 04 Jun 2008 23:55:36 GMT
[View Forum Message](#) <> [Reply to Message](#)

oh i give up.

Subject: Re: NightRegulator PLEASE HELP
Posted by [arrow](#) on Thu, 05 Jun 2008 00:19:46 GMT
[View Forum Message](#) <> [Reply to Message](#)

Nightma12 wrote on Wed, 04 June 2008 12:48there will be a message in your admin channel saying the line it was caused on there is no message there it just has it in the nightregulator box.

Subject: Re: NightRegulator PLEASE HELP
Posted by [a000clown](#) on Thu, 05 Jun 2008 07:20:09 GMT
[View Forum Message](#) <> [Reply to Message](#)

The error message in irc gets sent as a notice, so maybe your irc client sent it to your status window... If you even know what a status window is...

Subject: Re: NightRegulator PLEASE HELP
Posted by [PsuFan](#) on Thu, 05 Jun 2008 11:47:39 GMT
[View Forum Message](#) <> [Reply to Message](#)

What internet browser do you have? SSGM isnt mine.. ask them

Subject: Re: NightRegulator PLEASE HELP
Posted by [arrow](#) on Thu, 05 Jun 2008 14:16:20 GMT
[View Forum Message](#) <> [Reply to Message](#)

ok if SSGM isn't yours then is this message yours or do you know what it is its whenever i try to load the server it says this in both irc admin and regular:

```
<arrows_bot> [NR] BIATCHversion1.1beta1,builtonMay132007at00:  
<arrows_bot> [NR] FATALERROR: Could not open configuration file ./cfg/biatch/main.ini!
```

Subject: Re: NightRegulator PLEASE HELP
Posted by [arrow](#) on Fri, 06 Jun 2008 01:56:56 GMT
[View Forum Message](#) <> [Reply to Message](#)

nvm i got it all the server is arrow and the name is arrow's server C&C mode bye
