

---

Subject: Map help

Posted by [fatalcry](#) on Tue, 25 Mar 2008 13:58:12 GMT

[View Forum Message](#) <> [Reply to Message](#)

---

umm well i made a map just for fun but when I placed it in level edit it wouldn't open because it was rendered or something but I didn't render it well I dont think so anyways i've uploaded it please someone help me as I have no idea what i've done :S

thanx

---

#### File Attachments

1) [snowy map.gmax](#), downloaded 147 times

---

---

Subject: Re: Map help

Posted by [ErroR](#) on Tue, 25 Mar 2008 15:27:48 GMT

[View Forum Message](#) <> [Reply to Message](#)

---

i exported it and it worked fine for me here take the w3d model (well it looked kinda too small if you want i can give you a model with a bigger one) p.s you want buildings in it?

---

#### File Attachments

1) [snowy map.W3D](#), downloaded 136 times

2) [works fine....bmp](#), downloaded 462 times

---

---

Subject: Re: Map help

Posted by [fatalcry](#) on Tue, 25 Mar 2008 15:36:34 GMT

[View Forum Message](#) <> [Reply to Message](#)

---

well its working for me now too dunno what happen but thanx.

and no I only wanted to make it for an Ai bot match map

---

---

Subject: Re: Map help

Posted by [ErroR](#) on Tue, 25 Mar 2008 15:57:22 GMT

[View Forum Message](#) <> [Reply to Message](#)

---

[fatalcry](#) wrote on Tue, 25 March 2008 17:36

well its working for me now too dunno what happen but thanx.

and no I only wanted to make it for an Ai bot match map

np

---

---

Subject: Re: Map help  
Posted by [fatalcry](#) on Wed, 26 Mar 2008 07:59:58 GMT  
[View Forum Message](#) <> [Reply to Message](#)

---

just wondering if theres a tutorial on changing the sky and adding weather effects?

if not could someone tell me how cos that would be cool

thanx

---

---

Subject: Re: Map help  
Posted by [Dealman](#) on Wed, 26 Mar 2008 11:46:18 GMT  
[View Forum Message](#) <> [Reply to Message](#)

---

That's made in LevelEdit.

Start up LevelEdit, load terrain and place desired objects and save. Then go to Edit - Background Settings.

There you see "Music", "Sky" and "Weather".

In Music you can put an .mp3 file which will be played as background music when the map is being played ingame.

In Sky you can set time of the day, e.g 00:00 will be night. You can also choose to have either moon (Full or Partial) or to have a sun. Also you can manage the clouds.

In Weather you can set if to have rain, raining ash or lightnings or snow. You can also manages how many particles per second that should fall. As well the heading of the particles and etc.

Play around a bit with it and get used to it.

Sincerely,  
Dealman.

---

---

Subject: Re: Map help  
Posted by [fatalcry](#) on Wed, 26 Mar 2008 14:23:43 GMT  
[View Forum Message](#) <> [Reply to Message](#)

---

ahh yes i see cheers.

thought it was going to be more complicated than that but thanx

---

---

Subject: Re: Map help  
Posted by [fatalcry](#) on Wed, 26 Mar 2008 16:16:16 GMT  
[View Forum Message](#) <> [Reply to Message](#)

---

grrrr i need help again

i decided to make a new proper map (btw new at mapping). I wanted to make a volcano that pours animated lava out of it which I've done but I used the Renx scroll texture thing but I realized that it only does it for one texture, can I not have multiple scroll textures?

if not is there another easy way to set the same kind of effect?

---

---

Subject: Re: Map help  
Posted by [fatalcry](#) on Thu, 27 Mar 2008 09:37:05 GMT  
[View Forum Message](#) <> [Reply to Message](#)

---

ok i sorted it ish it was just being a fool to me

---

---

Subject: Re: Map help  
Posted by [fatalcry](#) on Thu, 27 Mar 2008 16:12:01 GMT  
[View Forum Message](#) <> [Reply to Message](#)

---

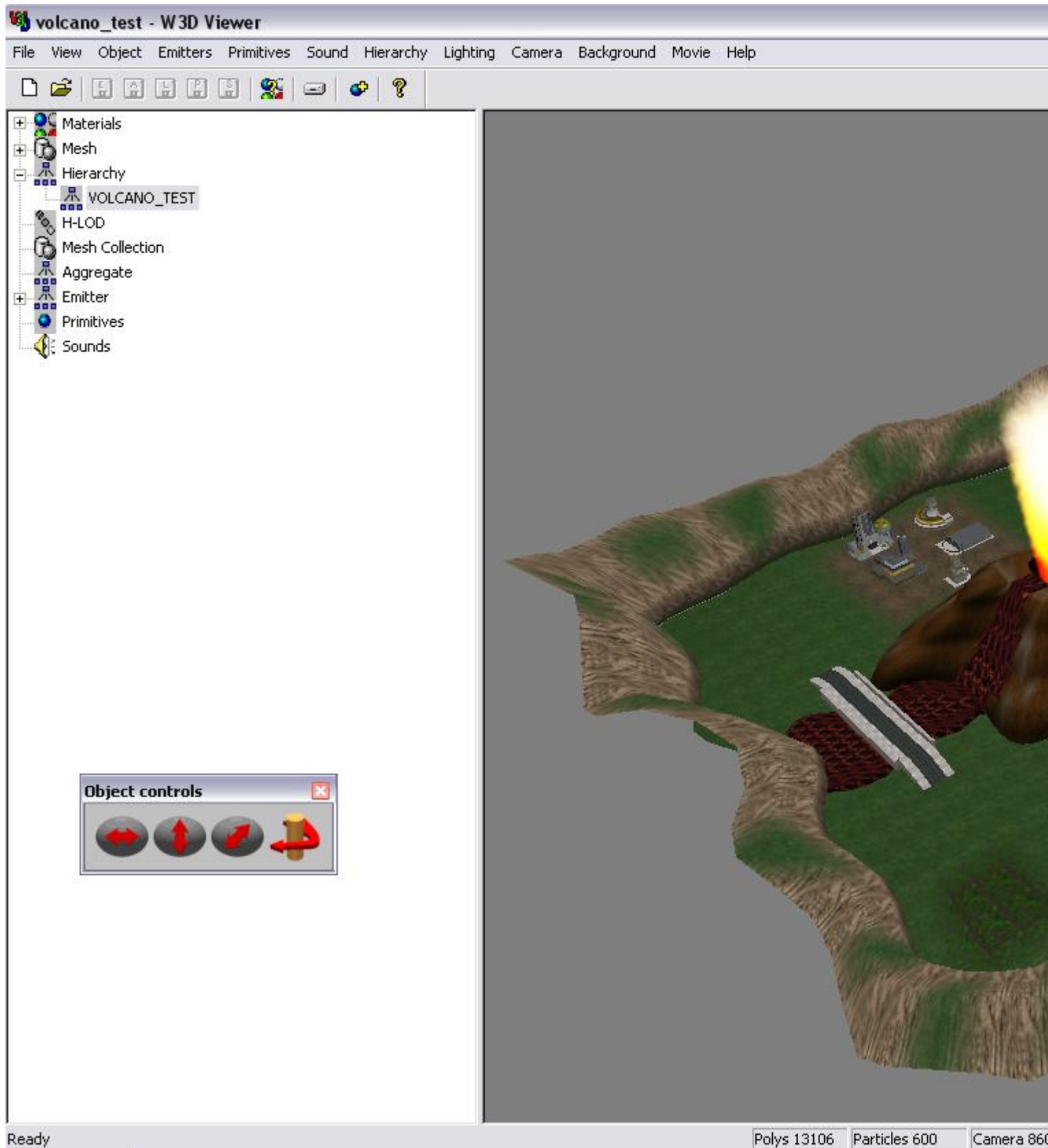
Anyways here the map I made what do you guys think?

also can anyone tell me how I place the emitter on Leveledit?

#### File Attachments

1) [cnc\\_volcano test.JPG](#), downloaded 230 times

---



Subject: Re: Map help  
Posted by [Dealman](#) on Thu, 27 Mar 2008 17:11:13 GMT  
[View Forum Message](#) <> [Reply to Message](#)

---

Quite nice if it's your first time!

A hint to make it better, make an tunnel through the volcano for infantries to maybe use some strategies to win. ^\_^

---

---

Subject: Re: Map help  
Posted by [fatalcry](#) on Thu, 27 Mar 2008 19:34:00 GMT  
[View Forum Message](#) <> [Reply to Message](#)

---

yep already doing that I just wanted to tweak the emitter abit

---

---

Subject: Re: Map help  
Posted by [ErroR](#) on Sat, 29 Mar 2008 16:38:46 GMT  
[View Forum Message](#) <> [Reply to Message](#)

---

not bad quite better than me ^^ i suck at map making so i only work in level edit.  
Anyways the flame looks a bit too big...  
I'll see what can I do about the emitter.

---

---

Subject: Re: Map help  
Posted by [renalpha](#) on Sat, 29 Mar 2008 17:43:17 GMT  
[View Forum Message](#) <> [Reply to Message](#)

---

fatalcry wrote on Thu, 27 March 2008 10:12Anyways here the map I made what do you guys think?

also can anyone tell me how I place the emitter on Leveledit?  
looks awesome

---

---

Subject: Re: Map help  
Posted by [mrÅ£Å\\$Å-z](#) on Sat, 29 Mar 2008 21:23:55 GMT  
[View Forum Message](#) <> [Reply to Message](#)

---

Nice Map! But nobody will play it... they are just too stupid to find and Download new Maps

---

---

Subject: Re: Map help  
Posted by [Veyrdite](#) on Sun, 30 Mar 2008 09:41:15 GMT  
[View Forum Message](#) <> [Reply to Message](#)

---

Brilliant! I've been modding for more than a year and I still haven't made a map that good!

---

---

Subject: Re: Map help  
Posted by [ErroR](#) on Mon, 31 Mar 2008 12:54:13 GMT  
[View Forum Message](#) <> [Reply to Message](#)

---

hmm about those emitters you could ask slave I'm sure he knows

---

---

Subject: Re: Map help  
Posted by [fatalcry](#) on Fri, 04 Apr 2008 10:50:40 GMT  
[View Forum Message](#) <> [Reply to Message](#)

---

cool thanx oh also the tutorial that helped me the most with that kind of map making was this tutorial on ren help <http://www.renhelp.net/index.php?mod=Tutorials&action=view&id=21>

also i've changed the emitter abit darker

looks more like a volcano eruption

also anyone know how to animate the emitter?

#### File Attachments

1) [volcano\\_smoke.JPG](#), downloaded 236 times

---

