

---

Subject: Dungeon Siege

Posted by [Dover](#) on Mon, 11 Feb 2008 03:05:19 GMT

[View Forum Message](#) <> [Reply to Message](#)

---

So basically, I think Dungeon Siege is one of the greatest RPGs made in a while. My only problem with it is this:

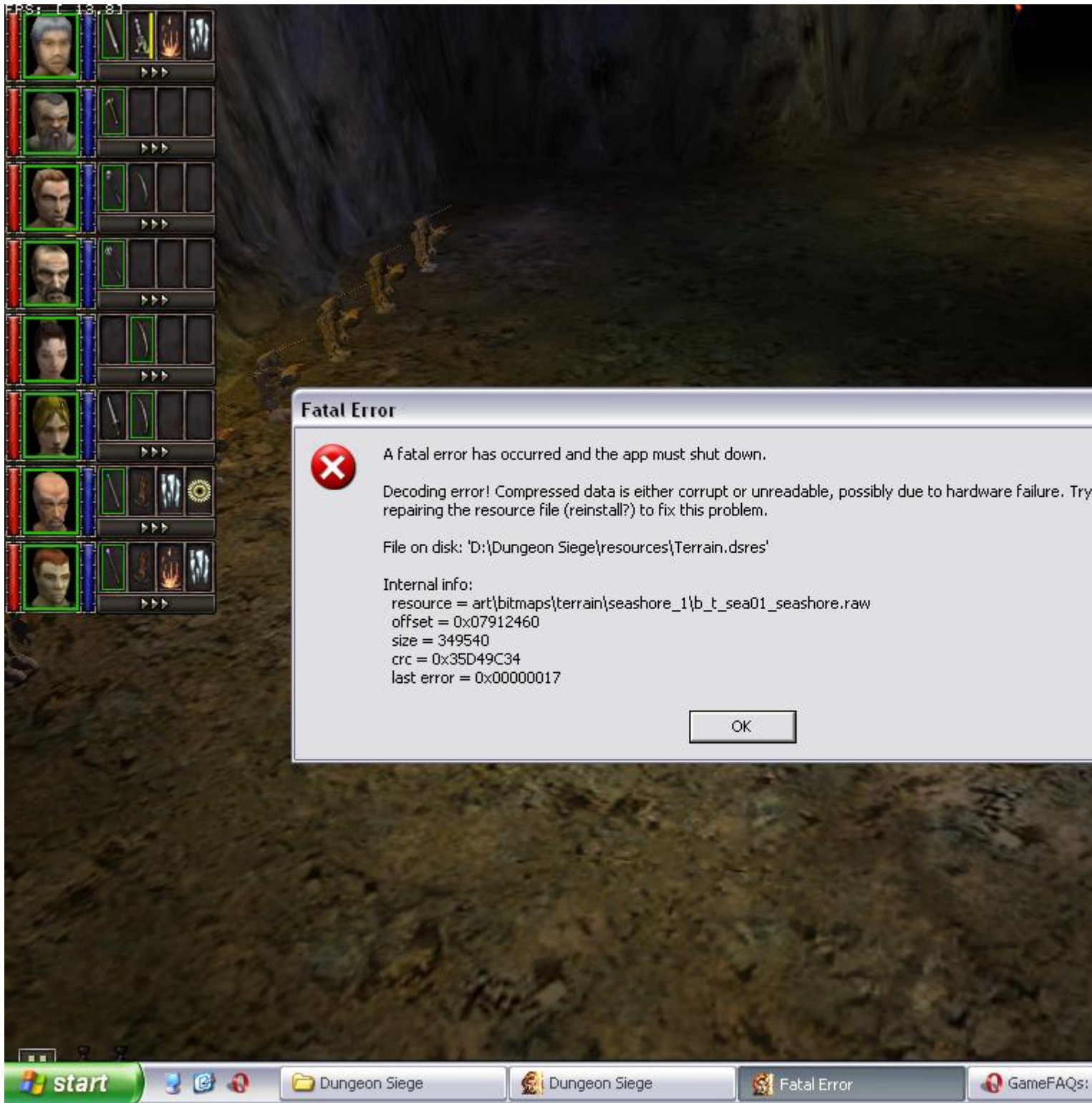
This happens to me every time I try to walk away from the Goblin caves, or, if I make a multiplayer game and start at the Bonepicker's Place and backtrack to the Goblin caves. It also happens in the Multiplayer campaign when trying to enter the 4th town, or the hidden Eastern Island.

The problem seems basic enough. There's a file that needs replacing, and I should re-install to fix it. The only problem is that I misplaced my CD a while back ago, so I re-install. I've looked online for the file with no success. Can any Dungeon Siege player upload theirs? This is my last hope, since I really don't feel like shelling out money to buy a game I already own.

### File Attachments

---

1) [Error'd.JPG](#), downloaded 1184 times



---

Subject: Re: Dungeon Siege

Posted by [renalpha](#) on Tue, 12 Feb 2008 19:27:34 GMT

[View Forum Message](#) <> [Reply to Message](#)

---

your pc sux balls

---

---

Subject: Re: Dungeon Siege  
Posted by [Goztow](#) on Tue, 12 Feb 2008 20:33:55 GMT  
[View Forum Message](#) <> [Reply to Message](#)

---

Warning + 2 renalpha. STOP SPAMMING IN TECH SUPPORT TOPICS

---

---

Subject: Re: Dungeon Siege  
Posted by [renalpha](#) on Mon, 18 Feb 2008 18:57:52 GMT  
[View Forum Message](#) <> [Reply to Message](#)

---

atleast im replying

however i think u have a too high cpu usage as this happens on the same spots.

if so  
then i was right in the 1st post in the first place.

---

---

Subject: Re: Dungeon Siege  
Posted by [Dover](#) on Mon, 18 Feb 2008 21:23:22 GMT  
[View Forum Message](#) <> [Reply to Message](#)

---

renalpha wrote on Mon, 18 February 2008 10:57atleast im replying

however i think u have a too high cpu usage as this happens on the same spots.

if so  
then i was right in the 1st post in the first place.

My CPU usage is fine, kthx. The only part that's outdated on my system is the video card, and I get a smooth 30-40 FPS while playing, so clearly I'm okay on the hardware department.

I have a corrupt file. It's that simple. Does anyone have a replacement?

---

---

Subject: Re: Dungeon Siege  
Posted by [renalpha](#) on Tue, 19 Feb 2008 01:09:37 GMT  
[View Forum Message](#) <> [Reply to Message](#)

---

google has even some nice imaginary worlds out there.

---

Subject: Re: Dungeon Siege  
Posted by [nopol10](#) on Sun, 24 Feb 2008 03:28:43 GMT  
[View Forum Message](#) <> [Reply to Message](#)

---

<http://www.planetdungeonsiege.com/gameinfo/pdsfaq2/showquestion.asp?faq=4&fl dAuto=236>

Should solve your problem.

---

Subject: Re: Dungeon Siege  
Posted by [Dover](#) on Tue, 04 Mar 2008 08:53:42 GMT  
[View Forum Message](#) <> [Reply to Message](#)

---

I don't have my disc, so I can't do any of that.

I realize it's about a 400 mb file, but it'd be really helpful if someone uploaded it someplace for me.

---

Subject: Re: Dungeon Siege  
Posted by [Ghostshaw](#) on Tue, 04 Mar 2008 09:04:38 GMT  
[View Forum Message](#) <> [Reply to Message](#)

---

The problem is that that would be illegal....

-Ghost-

---

Subject: Re: Dungeon Siege  
Posted by [CarrierII](#) on Tue, 04 Mar 2008 09:15:23 GMT  
[View Forum Message](#) <> [Reply to Message](#)

---

Yeah well, obviously one posts a "Check your PMs" message.

Dover, how about downloading an illegal copy of the disk, and just taking the file you want, then deleting it?

---

Subject: Re: Dungeon Siege  
Posted by [Dover](#) on Wed, 05 Mar 2008 13:06:31 GMT  
[View Forum Message](#) <> [Reply to Message](#)

---

CarrierII wrote on Tue, 04 March 2008 01:15Yeah well, obviously one posts a "Check your PMs" message.

Dover, how about downloading an illegal copy of the disk, and just taking the file you want, then

---

deleting it?

That's my last resort. Apparently nobody can help me here, so I might as well.

---