

---

Subject: RenX W3D edition Help

Posted by [The Executor](#) on Thu, 07 Feb 2008 16:51:06 GMT

[View Forum Message](#) <> [Reply to Message](#)

---

Okay I have renX and I got that W3D importer and I followed the install instructions and sent it to the C:\gmax\gamepacks\westwood\ folder and I overwrite everything just like it said and it does not work. When it turns on it says Renx - W3D modular edition and when I go to file--->Import the W3D option is not there so can I have some help or guidance?

---

---

Subject: Re: RenX W3D edition Help

Posted by [cnc95fan](#) on Thu, 07 Feb 2008 17:29:41 GMT

[View Forum Message](#) <> [Reply to Message](#)

---

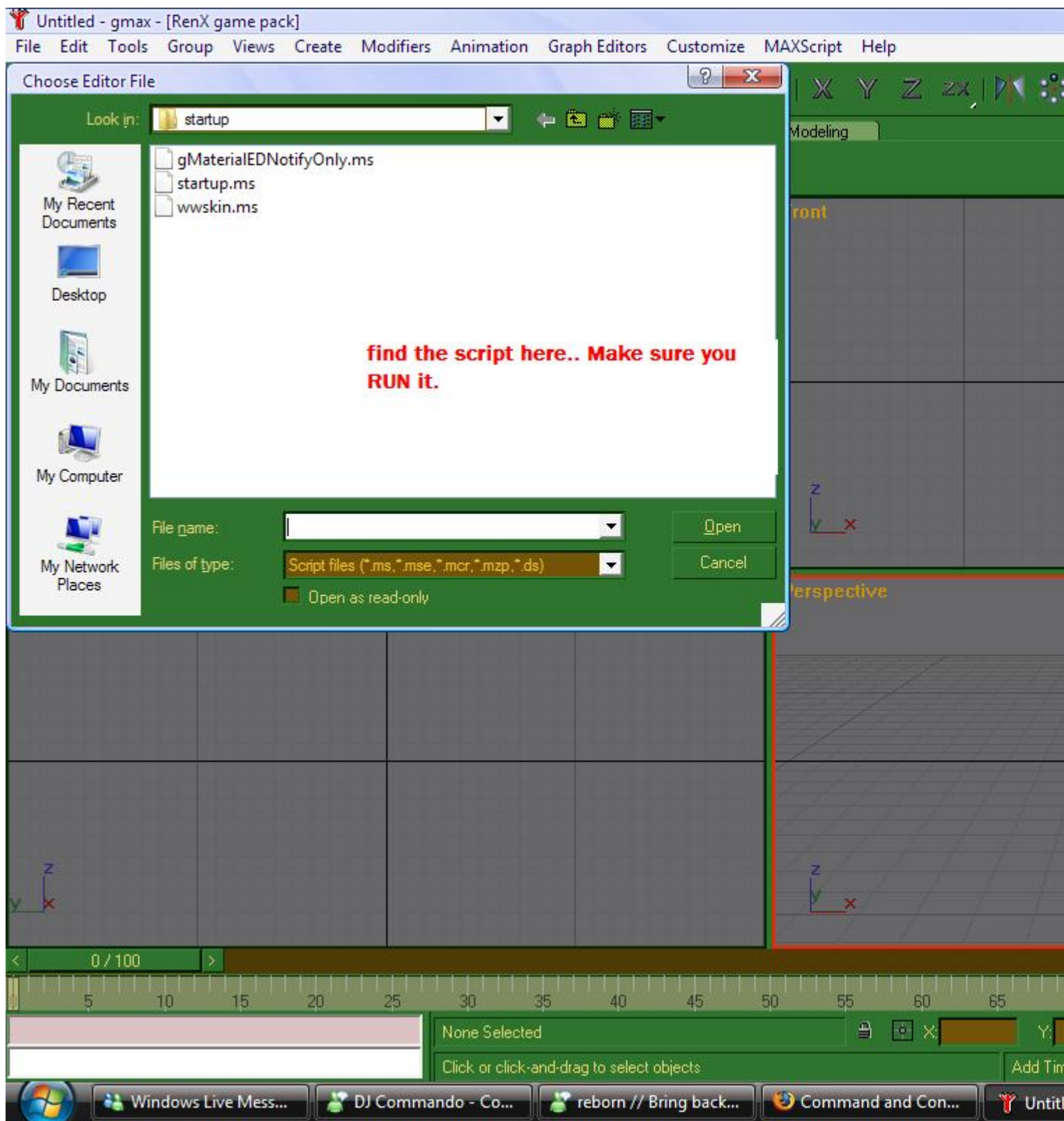
I don't have the script downloaded, but I'll show you anyway...

---

#### File Attachments

1) [renx.JPG](#), downloaded 508 times

---



Subject: Re: RenX W3D edition Help  
Posted by [The Executor](#) on Fri, 08 Feb 2008 16:45:51 GMT

[View Forum Message](#) <> [Reply to Message](#)

---

Okay nothing happened, I went to MAXscript---->Run script and I selected the script (something like "Renx-WME") and no icon showed up and nothing else appeared in the import menu. So what is wrong here?

---

---

Subject: Re: RenX W3D edition Help  
Posted by [cnc95fan](#) on Fri, 08 Feb 2008 17:49:31 GMT  
[View Forum Message](#) <> [Reply to Message](#)

---

I've noticed it does that, you will have to mess around with it a bit.. It's tricky to get running..

---

---

Subject: Re: RenX W3D edition Help  
Posted by [The Elite Officer](#) on Fri, 08 Feb 2008 18:07:06 GMT  
[View Forum Message](#) <> [Reply to Message](#)

---

Wow lol, MSwindows you are pretty lame....

---

---

Subject: Re: RenX W3D edition Help  
Posted by [Jerad2142](#) on Sat, 09 Feb 2008 05:50:07 GMT  
[View Forum Message](#) <> [Reply to Message](#)

---

The Elite Officer wrote on Fri, 08 February 2008 11:07Wow lol, MSwindows you are pretty lame.... Dude, just because you know how to do it doesn't mean you should call him lame, instead maybe YOU should answer his question.

Customize User Interface->Main UI->Click drag "Import a W3D file" onto the main button tool bar.

---

---

Subject: Re: RenX W3D edition Help  
Posted by [The Executor](#) on Tue, 12 Feb 2008 17:48:19 GMT  
[View Forum Message](#) <> [Reply to Message](#)

---

thanks for your help

---

---

Subject: Re: RenX W3D edition Help  
Posted by [renalpha](#) on Tue, 12 Feb 2008 19:14:18 GMT  
[View Forum Message](#) <> [Reply to Message](#)

---

The Elite Officer wrote on Fri, 08 February 2008 12:07Wow lol, MSwindows you are pretty lame.... Wow you love mirrors right?

---