

---

Subject: Games switching automatically to Desktop  
Posted by [mrÅ£Ä\\$Ä-z](#) on Thu, 07 Feb 2008 14:41:15 GMT  
[View Forum Message](#) <> [Reply to Message](#)

---

Hey guys i have a Problem, on some games if i starting to play then my window automatically switches to dektop, then i cant switch back to game sometimes i got a new PC and a flatscreen, can any1 help me? on some games i cant play cause im never able to switch back like The Elder Scrolls, GTA San Andreas Online, and UT2004 Online I changed all Settings on my Flatscreen, but nothing helped

---

Subject: Re: Games switching automatically to Desktop  
Posted by [Caveman](#) on Thu, 07 Feb 2008 16:09:01 GMT  
[View Forum Message](#) <> [Reply to Message](#)

---

What happens when you try to alt-tab back into game?

---

Subject: Re: Games switching automatically to Desktop  
Posted by [mrÅ£Ä\\$Ä-z](#) on Thu, 07 Feb 2008 16:34:45 GMT  
[View Forum Message](#) <> [Reply to Message](#)

---

blackscreen for 5 secs then its switching back to Desktop

---

Subject: Re: Games switching automatically to Desktop  
Posted by [Caveman](#) on Thu, 07 Feb 2008 17:51:18 GMT  
[View Forum Message](#) <> [Reply to Message](#)

---

Thats normally an indication that you don't meet the minimum requirements for the game or you have bad drivers.

---

Subject: Re: Games switching automatically to Desktop  
Posted by [mrÅ£Ä\\$Ä-z](#) on Thu, 07 Feb 2008 18:07:52 GMT

NO i have a Fucking greate Computer, it has enough power for all games wich im playing! Or do i need a new driver for my Flatscreen?  
on some games it works Perfect.

## File Attachments

1) [Leistung.jpg](#), downloaded 2802 times



---

Subject: Re: Games switching automatically to Desktop  
Posted by [Ethenal](#) on Thu, 07 Feb 2008 18:13:28 GMT

[View Forum Message](#) <> [Reply to Message](#)

---

My iMac is faster than that, try again.

---

---

Subject: Re: Games switching automatically to Desktop  
Posted by [mr£ÄŞÄ-z](#) on Thu, 07 Feb 2008 18:16:17 GMT

[View Forum Message](#) <> [Reply to Message](#)

---

What should i try again ? im sure my computer is Fighting with my Flatscreen  
about the Resolution, but both are on 1280 x 1024

---

---

Subject: Re: Games switching automatically to Desktop  
Posted by [F1r3st0rm](#) on Thu, 07 Feb 2008 18:49:46 GMT

[View Forum Message](#) <> [Reply to Message](#)

---

HP sucks

---

---

Subject: Re: Games switching automatically to Desktop  
Posted by [mr£ÄŞÄ-z](#) on Thu, 07 Feb 2008 19:12:39 GMT

[View Forum Message](#) <> [Reply to Message](#)

---

F1r3st0rm wrote on Thu, 07 February 2008 12:49HP sucks  
Doesnt matter if it sucks or not, maybe you suck, but now please dont Spam only answer my  
Question.

---

---

Subject: Re: Games switching automatically to Desktop  
Posted by [Xylaquin](#) on Thu, 07 Feb 2008 19:17:00 GMT

[View Forum Message](#) <> [Reply to Message](#)

---

I doubt your pc is "fighting" with your monitor. Perhaps the games' refresh rate is set too high,  
either that or you could try updating your drivers (and before you shout at us, even the best of  
cards update their drivers, it's not like we're saying your pc is bad).

Then again, what Graphics Card do you have?

---

---

Subject: Re: Games switching automatically to Desktop  
Posted by [mr£ÄŞÄ-z](#) on Thu, 07 Feb 2008 19:22:39 GMT

[View Forum Message](#) <> [Reply to Message](#)

---

radeon x1300 ( not Pro )

---

---

Subject: Re: Games switching automatically to Desktop  
Posted by [Xylaquin](#) on Thu, 07 Feb 2008 19:26:42 GMT  
[View Forum Message](#) <> [Reply to Message](#)

---

ah well, there you go then. Don't expect to be able to play demanding games with a Radeon x1300 & 768MB of RAM, especially at 1280x1024.

This chart here, shows you can expect 2-5 frames per second, if you were able to run the thing.

---

---

Subject: Re: Games switching automatically to Desktop  
Posted by [mr£ÄŞÄ-z](#) on Thu, 07 Feb 2008 19:41:05 GMT  
[View Forum Message](#) <> [Reply to Message](#)

---

that sucks i play games with better graphics than GTA etc. AND THEY WORK PERFECT. GTA SHOULD work perfect too but it doesnt T\_T

---

---

Subject: Re: Games switching automatically to Desktop  
Posted by [Lone0001](#) on Thu, 07 Feb 2008 20:54:06 GMT  
[View Forum Message](#) <> [Reply to Message](#)

---

F1r3st0rm wrote on Thu, 07 February 2008 12:49HP Rocks  
Fixed (sorry couldn't resist)

ON topic(sorta): Yea alot of the time if a video card cannot handle a game it just goes back to desktop or freezes at loading screen then crashes. The crappy video card in my laptop freezes on load screen and just crashes for UT3

---

---

Subject: Re: Games switching automatically to Desktop  
Posted by [mr£ÄŞÄ-z](#) on Thu, 07 Feb 2008 21:06:49 GMT  
[View Forum Message](#) <> [Reply to Message](#)

---

Isnt there a Driver that will fix the Problem with my Games?

---

---

Subject: Re: Games switching automatically to Desktop  
Posted by [JPNOD](#) on Thu, 07 Feb 2008 21:29:26 GMT  
[View Forum Message](#) <> [Reply to Message](#)

---

HP is probably one of the better brands for business, regardless of the fact that it's not meant for gaming. Just take a HP server with service better than any selfbuild server you can think off.

First things you could try -

- Download the latest driver from the ATI website
- Reboot you pc in safe mode (f8) before the Windows logo shows.
- Remove it by Software
- Reboot
- Install the new VGA driver.

If this doesn't work, you could try the same steps all over but instead of step 3, add a step 4 go to <http://www.drivercleaner.net/> or a freeware program. This will remove all the old files that the driver has left. (Shouldn't be necessary) try the first steps first.

---

---

Subject: Re: Games switching automatically to Desktop

Posted by [jnz](#) on Thu, 07 Feb 2008 21:49:20 GMT

[View Forum Message](#) <> [Reply to Message](#)

---

F1r3st0rm wrote on Thu, 07 February 2008 18:49HP sucks

This is actually true. It is known for people like HP and Dell to compromise on parts which you're not told about. RAM, Video card and Processor are not the only thing that makes a computer fast.

---

---

Subject: Re: Games switching automatically to Desktop

Posted by [R315r4z0r](#) on Thu, 07 Feb 2008 22:02:18 GMT

[View Forum Message](#) <> [Reply to Message](#)

---

It doesn't matter what type of monitor you have... the if the monitor is showing you your desktop that means it is working fine. The problem is your computer.

Just a question, did you happen to see that desktop thread where people are posting their desktops? Did you happen to download the program I posted called Deskspace?

---

---

Subject: Re: Games switching automatically to Desktop

Posted by [Romaner](#) on Thu, 07 Feb 2008 22:20:17 GMT

[View Forum Message](#) <> [Reply to Message](#)

---

no offense but your pc isnt all that good, you got amd 3500 processor and 768 ram probably at 400mhz. before you even run any games you are probably losing about 200mg of your ram to all the antiviruses, firewalls, windows itself and all the other stuff you have running in the background. my old computer had amd 4000+, 2 gigs of ram and x800 pro gfx card, and it wasnt all that great. my suggestion would be to get a better video card since you can probably get a way better one for cheap unless you are using agp im not sure if there are still cards being sold and how much they are since pci-e is the new bus or whatever its called.

Edit: i just looked at the screen shot you just posted and it says you have amd 64 3500+ processor running at 984Mhz, my 4000+ cpu ran at 2.2ghz so then yours should be at 2.0ghz so i am now guessing that your cpu is failing.

---

---

Subject: Re: Games switching automatically to Desktop  
Posted by [mrÅ£ÅŞÅ-z](#) on Thu, 07 Feb 2008 22:28:32 GMT  
[View Forum Message](#) <> [Reply to Message](#)

---

I dont think its my Graphics card, i play Warrock on BEST Graphics without Problemms. (Heres a Pic of Best Warrock Graphics)

But GTA dont has good Graphics like Warrock, but its switching back to Desktop: (Heres a Pic of Best GTA Graphics)

PS. Warrock is a Free game, wich you only can Play Online, Download at: [www.Warrock.net](http://www.Warrock.net)

---

---

Subject: Re: Games switching automatically to Desktop  
Posted by [Romaner](#) on Thu, 07 Feb 2008 22:35:50 GMT  
[View Forum Message](#) <> [Reply to Message](#)

---

check your cpu... since you posted at the same time i edited my post i am guessing you missed my edit.

i think there might be a problem with your processor since it is running at way to low of hertz that it should be. i think it should be 2.0ghz not under 1ghz as your screen shot suggests it is.

---

---

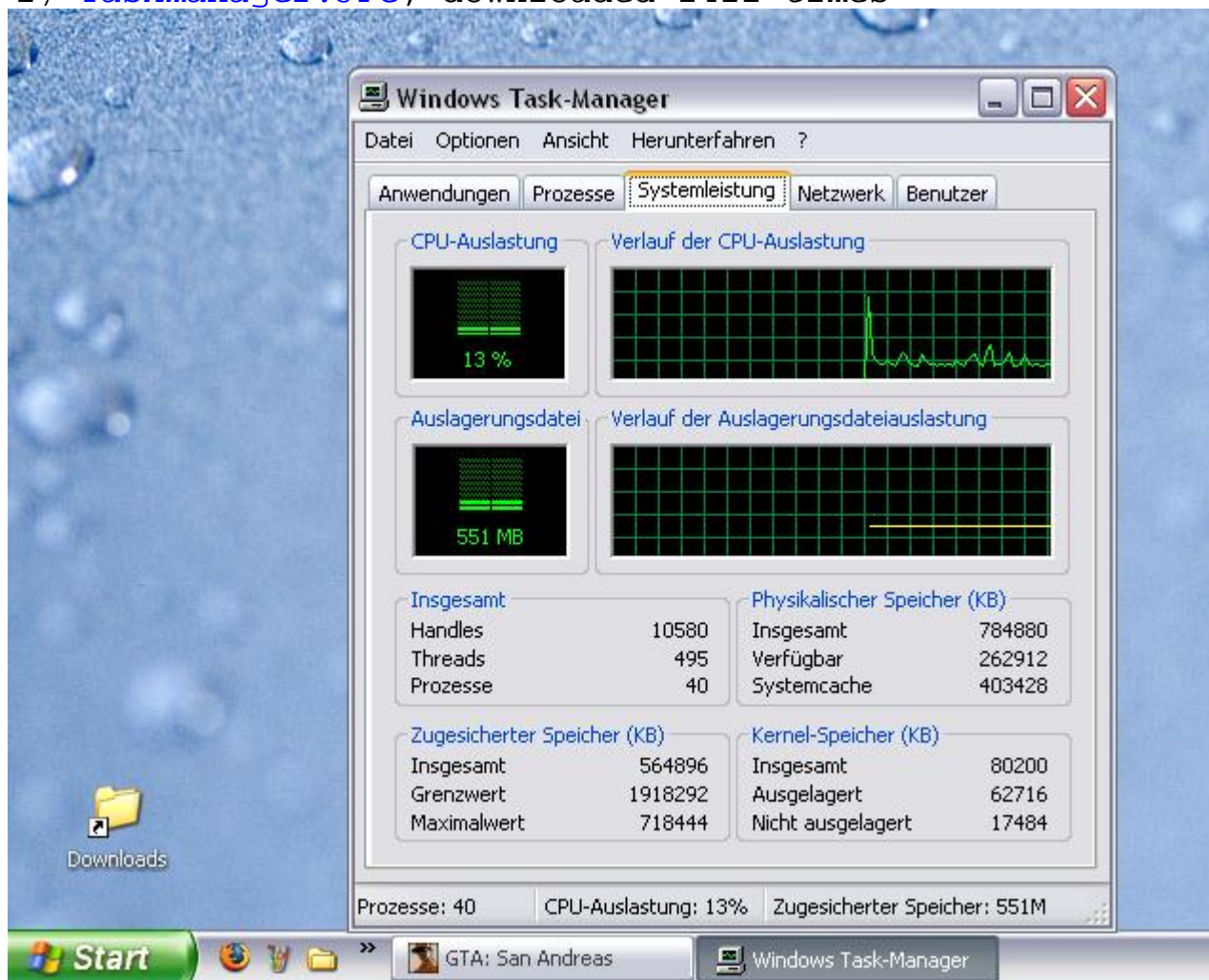
Subject: Re: Games switching automatically to Desktop  
Posted by [mrÅ£ÅŞÅ-z](#) on Thu, 07 Feb 2008 22:40:19 GMT  
[View Forum Message](#) <> [Reply to Message](#)

---

GTA is Running:

## File Attachments

1) [Taskmanager.JPG](#), downloaded 2421 times



---

Subject: Re: Games switching automatically to Desktop  
Posted by [R315r4z0r](#) on Thu, 07 Feb 2008 23:33:53 GMT

[View Forum Message](#) <> [Reply to Message](#)

---

R315r4z0r wrote on Thu, 07 February 2008 17:02

Just a question, did you happen to see that desktop thread where people are posting their desktops? Did you happen to download the program I posted called Deskspace? Did you download that program? Because that program has that sorta effect on games if the program isn't turned off.

---

Subject: Re: Games switching automatically to Desktop  
Posted by [Caveman](#) on Thu, 07 Feb 2008 23:37:33 GMT

[View Forum Message](#) <> [Reply to Message](#)

Right to clear up the confusion, He has a AMD (obviously) which has AMD Cool 'n' Quiet. Which lowers the CPU multiplier to save energy and reduce fan noise.

GTA isn't using the CPU in that screenshot (The lastest one) because you minimized it it therefore runs as a background process and nothing in the game gets processed.

Im telling you now, if you loadup games and it goes back to desktop (More then one game) then its your computer. It either doesn't meet the requirements or the drivers are bad.

Have a look at this

Toggle Spoiler

Requirements

[edit]

Minimum

- \* 1 GHz Processor
  - o Pentium 3 / Athlon or equivalent
- \* 256MB RAM
- \* Win 98/Me/2000/Xp
- \* 64MB Graphics Card (DirectX 9 compatible)
  - o Radeon 8500 / GeForce 3 or equivalent
- \* 8X DVD-ROM Drive
- \* 3.6GB free HD space
- \* DirectX 9 compatible soundcard

[edit]

Recommended

- \* Intel pentium 4 HT 2,8 Ghz Processor Intel pentium D 3.0 GHZ / AMD Athlon X2 3800+
- \* 1GB RAM
- \* Win 98/Me/2000/Xp
- \* PCIe 256MB Graphics Card (DirectX 9c compatible)
  - o Radeon X800 / GeForce 6,7 or equivalent
- \* 16X DVD-ROM Drive
- \* 5.0GB free HD space
- \* DirectX 9 compatible soundcard

To play at 1280x1024 then you would need to have the recommended specs and your CPU isn't up to the job.

---

Subject: Re: Games switching automatically to Desktop

Posted by [mrÅ£Å\\$Å-z](#) on Thu, 07 Feb 2008 23:42:39 GMT

[View Forum Message](#) <> [Reply to Message](#)

---

After trying 10 times switching back to game its working. Im



playing GTA on best graphics without lag / Problemms etc, only that  
autoswitching problemm is annoying, my computer is perfect for GTA  
i can film with Fraps on best Quality without having lag ingame...

---

---

Subject: Re: Games switching automatically to Desktop  
Posted by [OWA](#) on Fri, 08 Feb 2008 12:29:04 GMT  
[View Forum Message](#) <> [Reply to Message](#)

---

Update all your drivers and do a malware check.

---

---

Subject: Re: Games switching automatically to Desktop  
Posted by [mr£ÄŞÄ-z](#) on Fri, 08 Feb 2008 12:32:55 GMT  
[View Forum Message](#) <> [Reply to Message](#)

---

I have no Malware (>\_>) my Computer is clean, already checked with FileSecurer 2.1, AVG, AntiVir and HijackThis.

---

---

Subject: Re: Games switching automatically to Desktop  
Posted by [OWA](#) on Fri, 08 Feb 2008 12:38:56 GMT  
[View Forum Message](#) <> [Reply to Message](#)

---

MadRockz wrote on Fri, 08 February 2008 12:32I have no Malware (>\_>) my Computer is clean, already checked with FileSecurer 2.1, AVG, AntiVir and HijackThis.  
Check it with Ad-Aware and Spybot Search & Destroy.

---

---

Subject: Re: Games switching automatically to Desktop  
Posted by [sadukar09](#) on Fri, 08 Feb 2008 12:54:34 GMT  
[View Forum Message](#) <> [Reply to Message](#)

---

MadRockz wrote on Fri, 08 February 2008 06:32I have no Malware (>\_>) my Computer is clean, already checked with FileSecurer 2.1, AVG, AntiVir and HijackThis.  
No computer is ever clean from malware, just so you know. Unless it's a new computer you just bought.

---

---

Subject: Re: Games switching automatically to Desktop  
Posted by [danpaul88](#) on Fri, 08 Feb 2008 14:46:39 GMT  
[View Forum Message](#) <> [Reply to Message](#)

---

And even then, if you bought it from HP or something it will have all sorts of crap running in the background that they install for you, supposedly helpful programs that simply sit around and hog RAM and CPU time. Not technically malware, but almost as bad.

Yet another reason why I always build my own machines, there's no crap preinstalled on them.

Anyway, on topic, UPDATE YOUR VIDEO DRIVERS. About 8 posts have told you to do this so far and you seem to have ignored every single one of them, so perhaps the capital letters will help you to read it.

---

Subject: Re: Games switching automatically to Desktop

Posted by [Carrierll](#) on Fri, 08 Feb 2008 15:49:26 GMT

[View Forum Message](#) <> [Reply to Message](#)

---

sadukar09 wrote on Fri, 08 February 2008 12:54MadRockz wrote on Fri, 08 February 2008 06:32I have no Malware (>\_>) my Computer is clean, already checked with FileSecurer 2.1, AVG, AntiVir and HijackThis.

No computer is ever clean from malware, just so you know. Unless it's a new computer you just bought.

What about my Home Linux based server?

---

Subject: Re: Games switching automatically to Desktop

Posted by [mrÄ&SÄ-z](#) on Fri, 08 Feb 2008 16:21:13 GMT

[View Forum Message](#) <> [Reply to Message](#)

---

I found the Problem, i only bought a new Cable for my Flatscreen, now all works fine

---

Subject: Re: Games switching automatically to Desktop

Posted by [Caveman](#) on Fri, 08 Feb 2008 18:12:04 GMT

[View Forum Message](#) <> [Reply to Message](#)

---

MadRockz wrote on Fri, 08 February 2008 16:21I found the Problem, i only bought a new Cable for my Flatscreen, now all works fine

Whether you have a CRT or a TFT/LCD doesn't matter. You still have a picture (like your desktop) you don't have a special cable that you use for games. You asked for help we've told you that you MUST update your video drivers.

Why ask for help and then totally ignore it? Just time wasting.

---

---

Subject: Re: Games switching automatically to Desktop

Posted by [Dover](#) on Fri, 08 Feb 2008 18:16:49 GMT

[View Forum Message](#) <> [Reply to Message](#)

---

Xylaquin wrote on Thu, 07 February 2008 11:17it's not like we're saying your pc is bad.

That's also not to say your PC is good.

Because it's not. My PC sucks, and it's better than yours.

Lower your refresh rate to 60 mhz. That solves 99% of these problems. If that doesn't work, update your video drivers. That also solves 99% of these problems.

---

Subject: Re: Games switching automatically to Desktop

Posted by [mr£ÄŞÄ-z](#) on Fri, 08 Feb 2008 21:26:08 GMT

[View Forum Message](#) <> [Reply to Message](#)

---

it was already on 60 mhz

---

Subject: Re: Games switching automatically to Desktop

Posted by [Ryu](#) on Fri, 08 Feb 2008 22:49:57 GMT

[View Forum Message](#) <> [Reply to Message](#)

---

MadRockz wrote on Fri, 08 February 2008 21:26it was already on 60 mhz

Check your resolution and what MHz it can handle on your graphics card box / online.

75 is better.

---

Subject: Re: Games switching automatically to Desktop

Posted by [Goztow](#) on Fri, 08 Feb 2008 23:33:22 GMT

[View Forum Message](#) <> [Reply to Message](#)

---

Topic starter said it ws solved and obviously doesn't want to listen to the help he asked for anyway. So let's just forget about this topic.

---

Subject: Re: Games switching automatically to Desktop

Posted by [mr£ÄŞÄ-z](#) on Sat, 09 Feb 2008 00:25:56 GMT

[View Forum Message](#) <> [Reply to Message](#)

---

Goztow wrote on Fri, 08 February 2008 17:33Topic starter said it ws solved and obviously doesn't want to listen to the help he asked for anyway. So let's just forget about this topic.

Yep, lock it please.

---