
Subject: Latest DirectX link-DX9 link is broken
Posted by [Veyrdite](#) on Thu, 27 Dec 2007 07:11:28 GMT
[View Forum Message](#) <> [Reply to Message](#)

Can someone provide a link to the latest directX.
I've changed computers and so ren gives me a black screen In gameplay.

Subject: Re: Latest DirectX link-DX9 link is broken
Posted by [Goztow](#) on Thu, 27 Dec 2007 09:49:02 GMT
[View Forum Message](#) <> [Reply to Message](#)

Google it.

Subject: Re: Latest DirectX link-DX9 link is broken
Posted by [havoc9826](#) on Thu, 27 Dec 2007 10:45:43 GMT
[View Forum Message](#) <> [Reply to Message](#)

<http://www.microsoft.com/downloads/Browse.aspx?DisplayLang=en&nr=20&categoryid=2&sortCriteria=date>

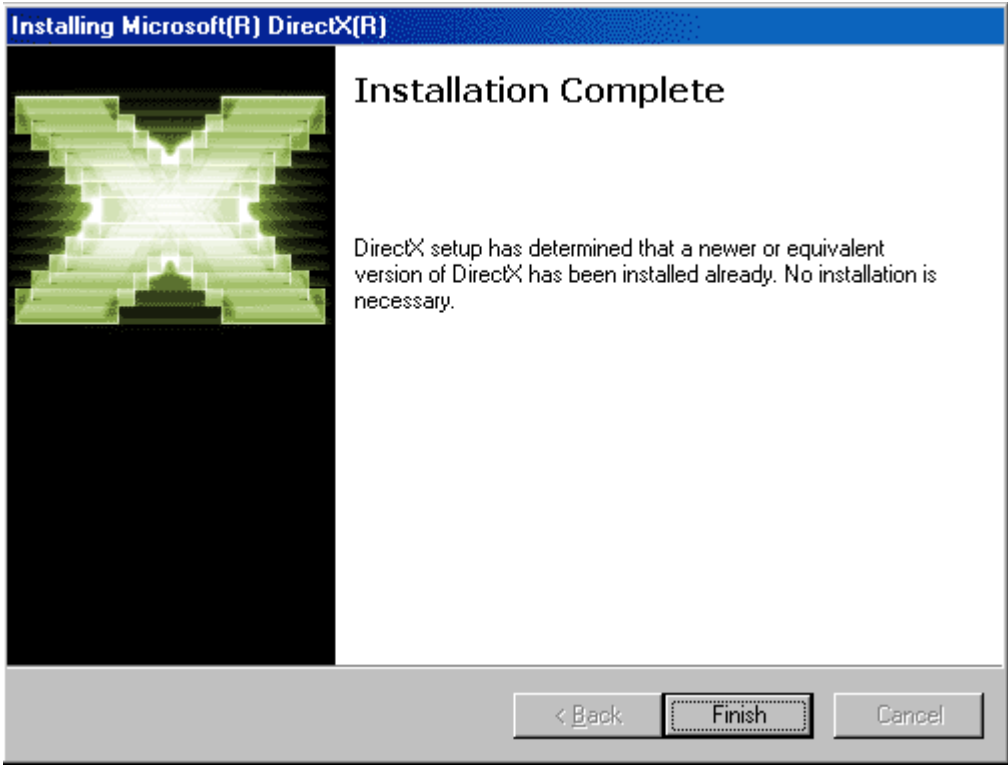
Subject: Re: Latest DirectX link-DX9 link is broken
Posted by [Veyrdite](#) on Thu, 27 Dec 2007 23:41:45 GMT
[View Forum Message](#) <> [Reply to Message](#)

(^scaled down)

I'm guessing my Display Adapter isn't compatible?

File Attachments

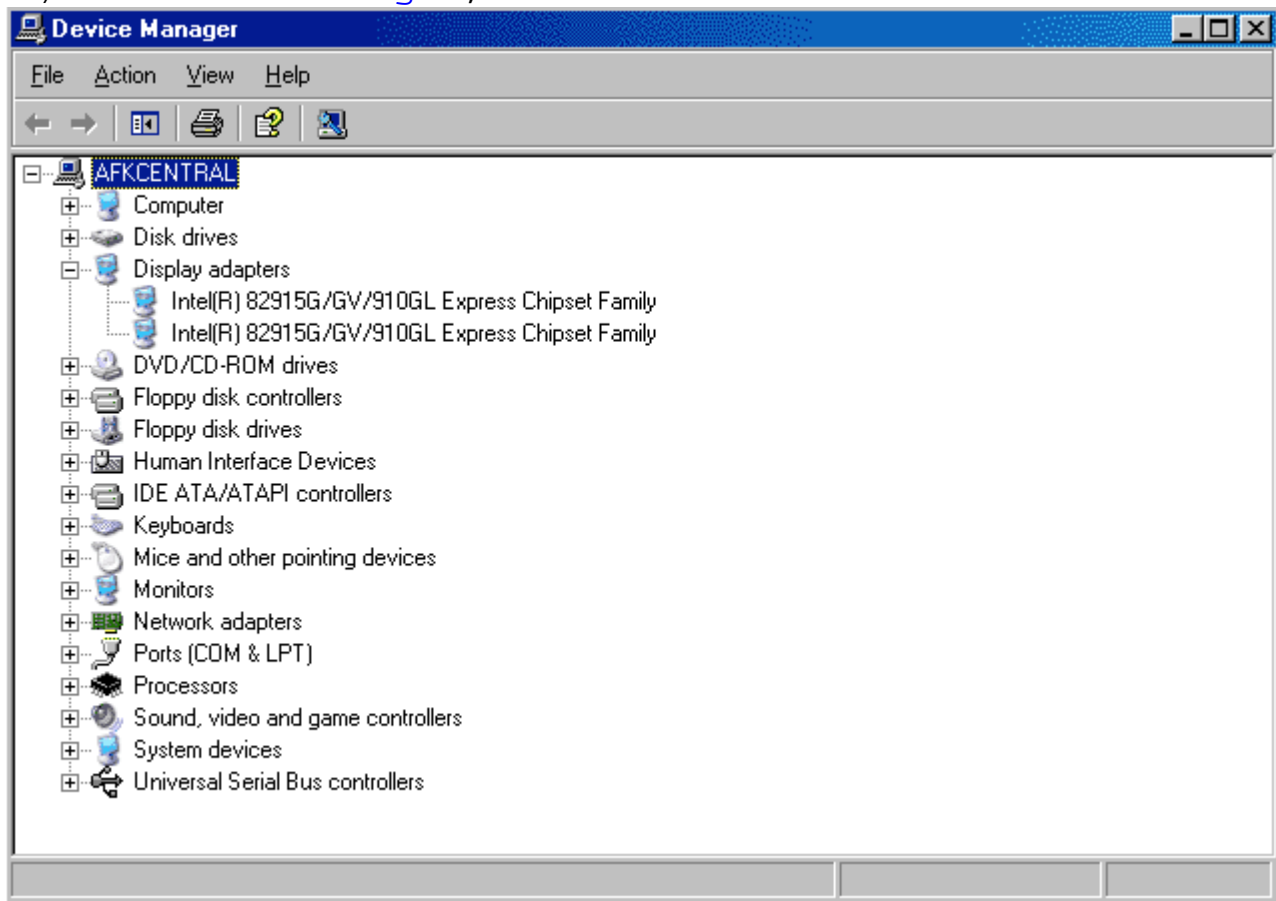
1) [directX.gif](#), downloaded 188 times



2) [directX.jpg](#), downloaded 233 times



3) [directxdriver.gif](#), downloaded 187 times



Subject: Re: Latest DirectX link-DX9 link is broken
Posted by [CarrierII](#) on Fri, 28 Dec 2007 13:47:55 GMT
[View Forum Message](#) <> [Reply to Message](#)

No. Reinstall Scripts AND DO NOT USE BLOOM OR SHADERS.

Subject: Re: Latest DirectX link-DX9 link is broken
Posted by [cmatt42](#) on Fri, 28 Dec 2007 19:32:39 GMT
[View Forum Message](#) <> [Reply to Message](#)

Delete sceneshaders.sdb.

Subject: Re: Latest DirectX link-DX9 link is broken
Posted by [Veyrdite](#) on Sun, 30 Dec 2007 05:17:10 GMT
[View Forum Message](#) <> [Reply to Message](#)

Renamed shader to .bak. Now it works. Thankyou.
Although I just noticed it can be turned of in the settings for bhs.dll in-game (although restart required).
