

---

Subject: I can use some help here  
Posted by [Dave](#) on Thu, 26 Oct 2006 13:12:23 GMT  
[View Forum Message](#) <> [Reply to Message](#)

---

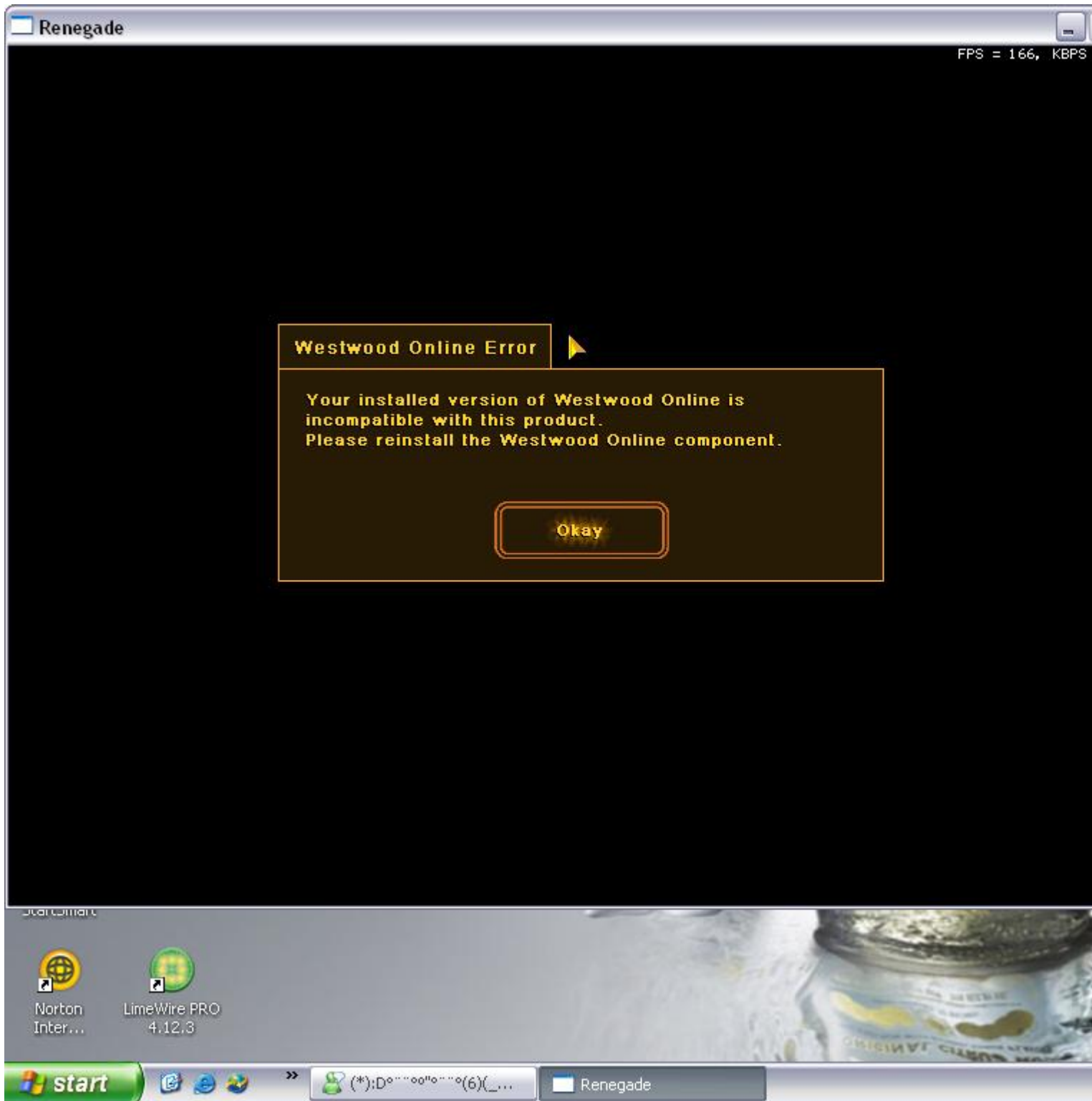
Well i just delete my server fds from my computer and i am trying to start ren and this is what it says

And i dont have my install cd anymore

### File Attachments

---

1) [help.JPG](#), downloaded 99 times



---

Subject: Re: I can use some help here  
Posted by [futura83](#) on Thu, 26 Oct 2006 13:26:57 GMT  
[View Forum Message](#) <> [Reply to Message](#)

---

easy t fix:

run the ren installer again, but only install westwood online components. this shouldnt take too long.

---

---

Subject: Re: I can use some help here  
Posted by [danpaul88](#) on Thu, 26 Oct 2006 13:32:29 GMT  
[View Forum Message](#) <> [Reply to Message](#)

---

DarkSbhxx wrote on Thu, 26 October 2006 14:12And i dont have my install cd anymore

AKA: He can't re-run the installation program...

The only real solution is probably to reinstall the Ren FDS, afaik that includes the WOL components. Either that or play on GSA...

---

---

Subject: Re: I can use some help here  
Posted by [Carrierll](#) on Mon, 30 Oct 2006 13:12:17 GMT  
[View Forum Message](#) <> [Reply to Message](#)

---

Yeah, INstalling the FDS does update the components. It also mucks around with a registry key that tells all WW apps where the SIC are AFAIK...

Install the FDS.

---