

---

Subject: woot!

Posted by [jnz](#) on Sun, 03 Sep 2006 19:06:55 GMT

[View Forum Message](#) <> [Reply to Message](#)

---

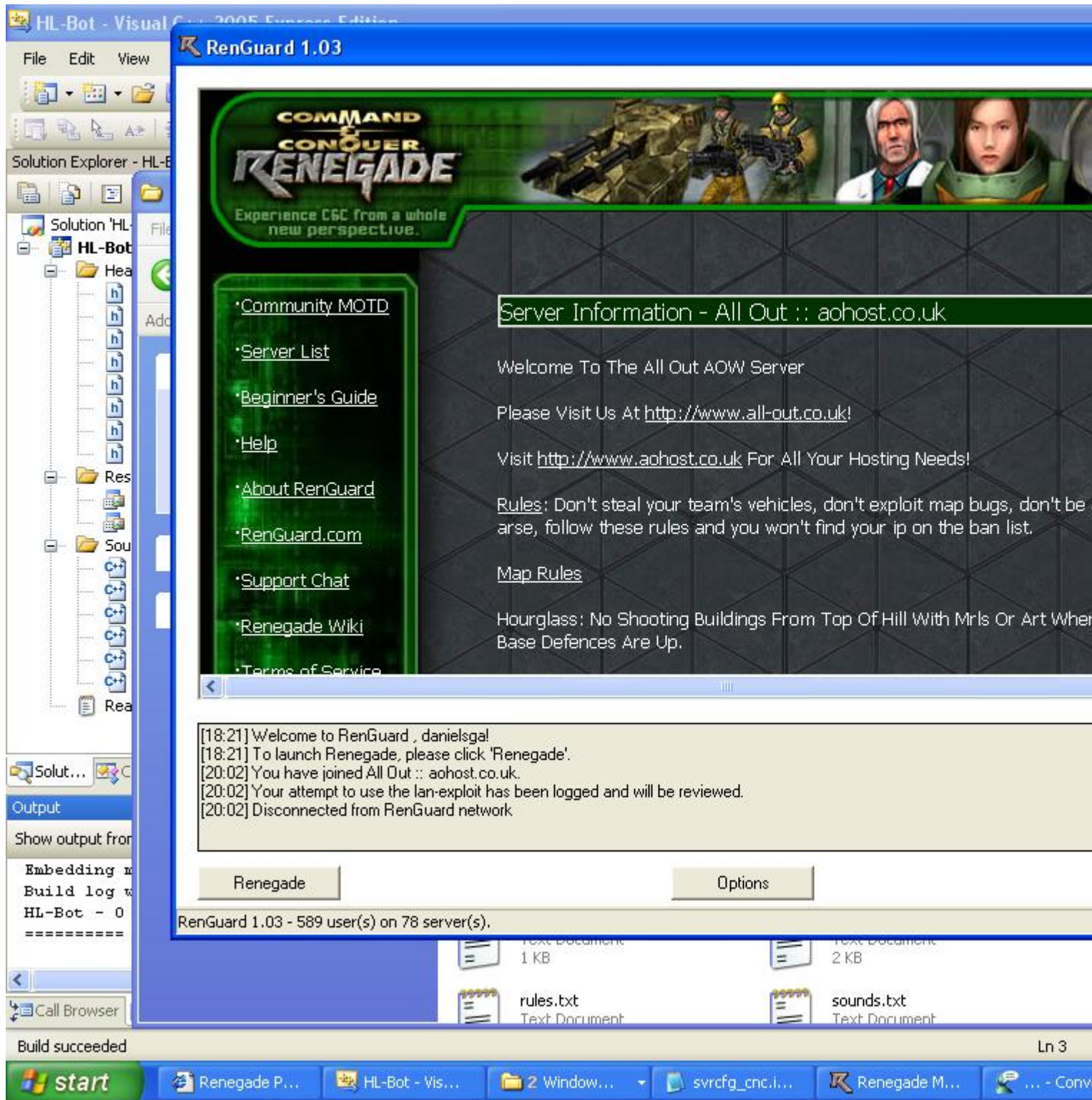
i was connect to rengaard and someone one the other end of the lan loggin in as me and i got kicked, it this a false positive?

i was not trying to cheat, repeat not trying to cheat and both computers were connected so why would it say this anyway?

### File Attachments

---

1) [woooow.JPG](#), downloaded 303 times



---

Subject: Re: woot!  
Posted by [jnz](#) on Sun, 03 Sep 2006 19:08:40 GMT  
[View Forum Message](#) <> [Reply to Message](#)

---

btw it just disconnected not banned.

---

---

Subject: Re: woot!

Posted by [cmatt42](#) on Sun, 03 Sep 2006 19:19:58 GMT

[View Forum Message](#) <> [Reply to Message](#)

---

If you've done nothing you aren't supposed to, don't worry about it.

---

---

Subject: Re: woot!

Posted by [jnz](#) on Sun, 03 Sep 2006 20:05:27 GMT

[View Forum Message](#) <> [Reply to Message](#)

---

cmatt42 wrote on Sun, 03 September 2006 20:19 If you've done nothing you aren't supposed to, don't worry about it.

thank you.

---

---

Subject: Re: woot!

Posted by [Blazer](#) on Mon, 04 Sep 2006 22:14:15 GMT

[View Forum Message](#) <> [Reply to Message](#)

---

It's be design. RG does not allow multiple computers to connect from the same IP with the same username. This blocks an exploit where someone could connect to RG with no cheats, and let it just sit there so they are "on RG", and then connect with another PC with cheats loaded (not running RG). Then could then join a server and cheat and if someone !rg'd them, they would appear to be on RG.

Yes its sad the extent people will go to just to cheat.

---

---

Subject: Re: woot!

Posted by [jnz](#) on Mon, 04 Sep 2006 22:22:57 GMT

[View Forum Message](#) <> [Reply to Message](#)

---

i thought i should post because it says it logged me trying to use the lan exploit.

i dont want to get a reputation of cheating.

but what i dont get is: why does it reconize it as a lan exploit because both computers were connected to rengaurd so it would if been imposible(for me) to cheat anyway.

---

---

Subject: Re: woot!

Posted by [Blazer](#) on Wed, 06 Sep 2006 08:22:36 GMT

[View Forum Message](#) <> [Reply to Message](#)

---

It doesn't care if both are running RG. It simply triggers the lan exploit warning if there are more than one instance with the same name. Don't worry you won't be banned or put in the hall of shame

---

Subject: Re: woot!

Posted by [jnz](#) on Wed, 06 Sep 2006 15:03:05 GMT

[View Forum Message](#) <> [Reply to Message](#)

---

thanks.

---