

---

Subject: sudden problem with FDS

Posted by [piotrkol1](#) on Sat, 25 Feb 2006 18:12:36 GMT

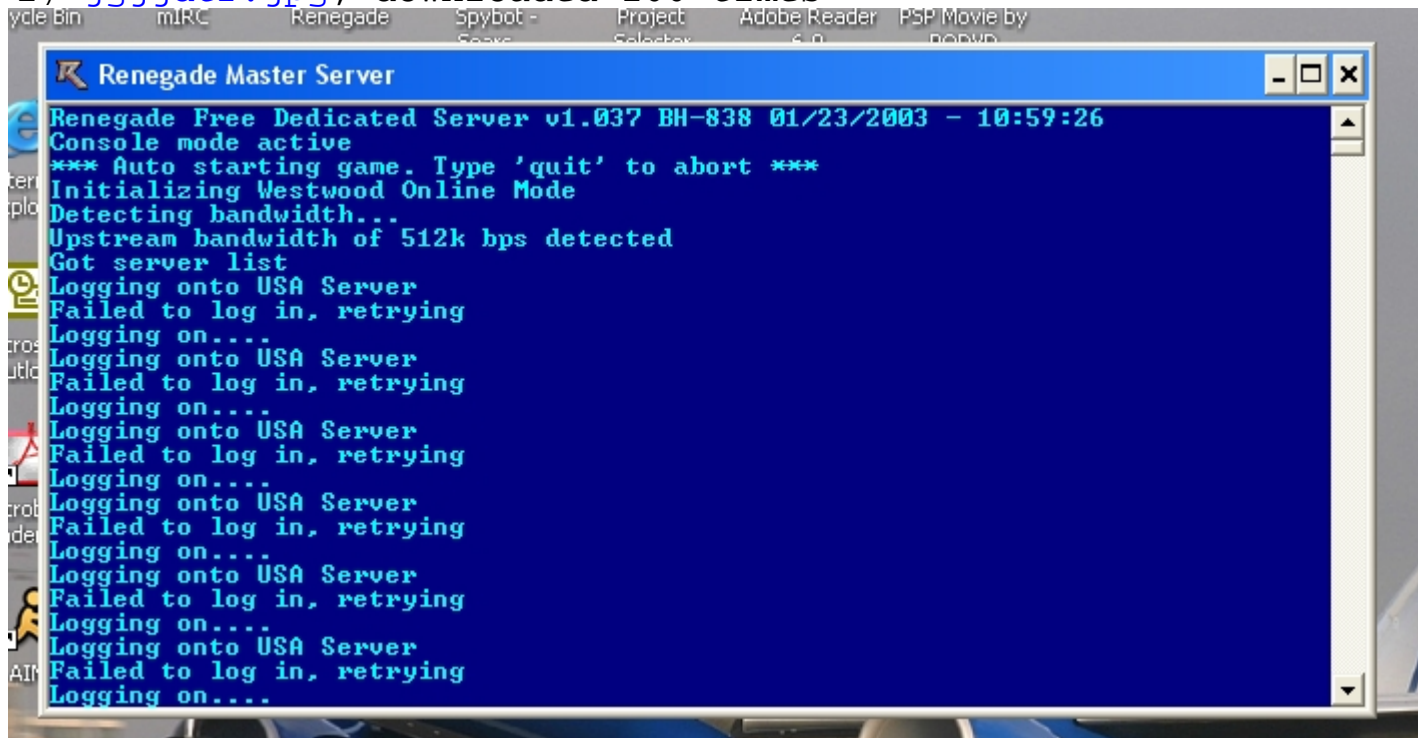
[View Forum Message](#) <> [Reply to Message](#)

---

recently without me making any changes this started happening to me with my fds

## File Attachments

1) [jgjjdtr.jpg](#), downloaded 266 times



---

Subject: Re: sudden problem with FDS

Posted by [PackHunter](#) on Sat, 25 Feb 2006 19:31:10 GMT

[View Forum Message](#) <> [Reply to Message](#)

---

Seems your server crashed.

---

Subject: Re: sudden problem with FDS

Posted by [Kamuix](#) on Sat, 25 Feb 2006 19:55:44 GMT

[View Forum Message](#) <> [Reply to Message](#)

---

Internet connection problems is all I can think of.

---

Subject: Re: sudden problem with FDS

Posted by [piotrkol1](#) on Sat, 25 Feb 2006 21:12:26 GMT

[View Forum Message](#) <> [Reply to Message](#)

---

so what can I do about it?

---

---

Subject: Re: sudden problem with FDS  
Posted by [Kamuix](#) on Sat, 25 Feb 2006 23:03:34 GMT  
[View Forum Message](#) <> [Reply to Message](#)

---

Make sure internet is connected.  
Check firewall.  
Thats all I can think of. If your server crashed it would still log you onto WOL.

---

---

Subject: Re: sudden problem with FDS  
Posted by [piotrkol1](#) on Sun, 26 Feb 2006 00:37:56 GMT  
[View Forum Message](#) <> [Reply to Message](#)

---

well my internet is connected, how do I check if my firewall is up?

---

---

Subject: Re: sudden problem with FDS  
Posted by [piotrkol1](#) on Sun, 26 Feb 2006 19:54:45 GMT  
[View Forum Message](#) <> [Reply to Message](#)

---

well i turned off my firewall and it still doesnt work, but still even before i had my firewall up and my server used to be fine, so does any one got any ideas because i really wanna get my server back up!!!!

---

---

Subject: Re: sudden problem with FDS  
Posted by [Kamuix](#) on Sun, 26 Feb 2006 21:12:17 GMT  
[View Forum Message](#) <> [Reply to Message](#)

---

Hmmm...Something in your server.ini file had been changed causing your server not to be able to connect to WOL.

---

---

Subject: Re: sudden problem with FDS  
Posted by [piotrkol1](#) on Sun, 26 Feb 2006 21:45:25 GMT  
[View Forum Message](#) <> [Reply to Message](#)

---

do you mean these files.....and how do i manage on fixing the problem?  
ps- on my brothers comp his server seems to run fine

---

## File Attachments

---

1) [gvvuiv.jpg](#), downloaded 187 times

File Edit Format View Help

```
[Settings]
ConfigName=Default C&C Server Settings
bGameTitle=[#1@C&C MoDeD mAPs sRv AdW]
bMotd=Commands: !rules !next !showmods !setjoin...type !help for a list of commands
RadarMode=1
bPassword=
MaxPlayers=20
StartingCredits=55
TimeLimitMinutes=30
ModName=
DoMapsLoop=yes
IsAutoRestart=yes
IsPassworded=no
IsQuickMatch=yes
IsLaddered=yes
RemixTeams=yes
CanRepairBuildings=yes
DriverIsAlwaysGunner=yes
SpawnWeapons=yes
IsFriendlyFirePermitted=no
IsTeamChangingAllowed=no
IsClanGame=no
BaseDestructionEndsGame=yes
BeaconPlacementEndsGame=yes
MapName=M00_Tutorial.mix
MapName00=M00_Tutorial.mix
MapName01=M13.mix
MapName02=C&C_Field.mix
MapName03=M03.mix
MapName04=M05.mix

MapName05=C&C_Complex.mix
MapName06=M06.mix
MapName07=M08.mix
MapName08=C&C_Mesa.mix
MapName09=M04.mix
MapName10=M11.mix
MapName11=C&C_Canyon.mix
MapName12=
MapName13=
```

2) [jgjjdtr.jpg](#), downloaded 168 times

```
Server - Notepad
File Edit Format View Help
[Server]
Config=svrcfg_cnc.ini
GameType=WOL
Nickname=wigger088
Password=piotrko1
Serial=0669823689328638613585
LoginServer=USA Server
Port=0
GameSpyGamePort=0
GameSpyQueryPort=0
BandwidthUp=0
NetUpdateRate=30
AllowRemoteAdmin=True
RemoteAdminPassword=piotrko1
RemoteAdminIP=
RemoteAdminPort=5001

[slave1]
Enable=0
Config=svrcfg_cnc.ini
Nickname=
Password=
BandwidthUp=0
Serial=
Port=0
```

---

Subject: Re: sudden problem with FDS  
Posted by [Kamuix](#) on Wed, 01 Mar 2006 05:23:10 GMT  
[View Forum Message](#) <> [Reply to Message](#)

The second one there. But its probably not that. I'm not sure anymore. Maybe someone else could help you with this.

---

Subject: Re: sudden problem with FDS  
Posted by [Darkmoon](#) on Thu, 02 Mar 2006 16:40:31 GMT  
[View Forum Message](#) <> [Reply to Message](#)

is your password correct and your account name?  
When your settings arn't right he will give this also...  
I don't know or this it is...  
Try it...  
more i can't do.  
Darkmoon

---

Subject: Re: sudden problem with FDS  
Posted by [PackHunter](#) on Thu, 02 Mar 2006 16:48:24 GMT  
[View Forum Message](#) <> [Reply to Message](#)

Try reinstalling a new FDS with a different nick. If that doesn't help it's not your settings but some sort of network related issue. Your IP might even be banned from XWIS

---

---

Subject: Re: sudden problem with FDS

Posted by [WarZman](#) on Sat, 18 Mar 2006 01:38:00 GMT

[View Forum Message](#) <> [Reply to Message](#)

---

or open port 4010-4020 on your firewall it helped for me

---