

---

Subject: Tiberian dawn Wall Section

Posted by [Spice](#) on Mon, 30 Jan 2006 10:24:31 GMT

[View Forum Message](#) <> [Reply to Message](#)

---

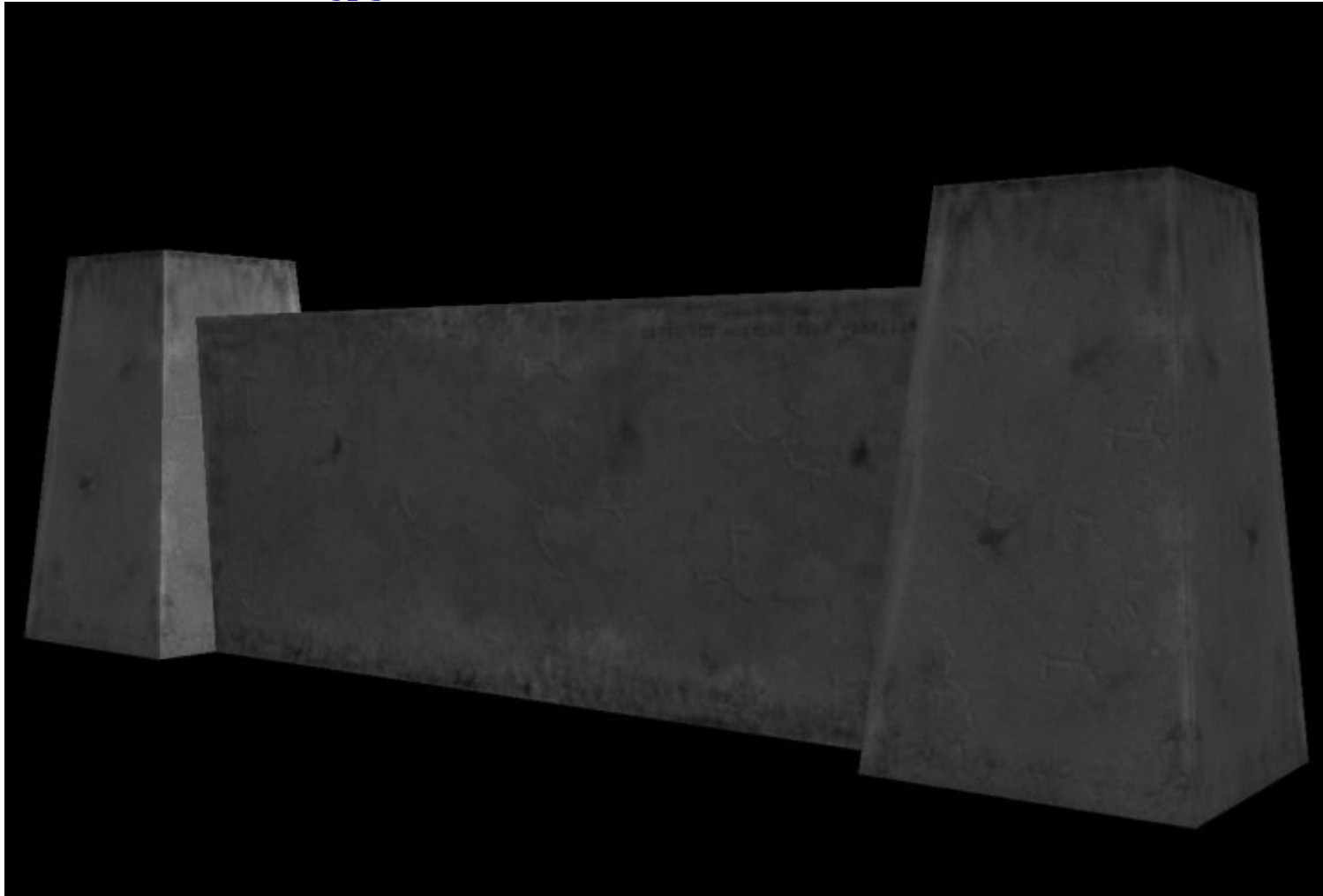
This doesn't really look like the Tiberian Dawn wall section but that is what I attempted to make, I pretty much failed. I'm going to try again tommorow. I thought I'd release it for mappers to use anyways.

The RAR below contains the files needed to place it on your map. Read the readme if you don't know how to get it in gmax.

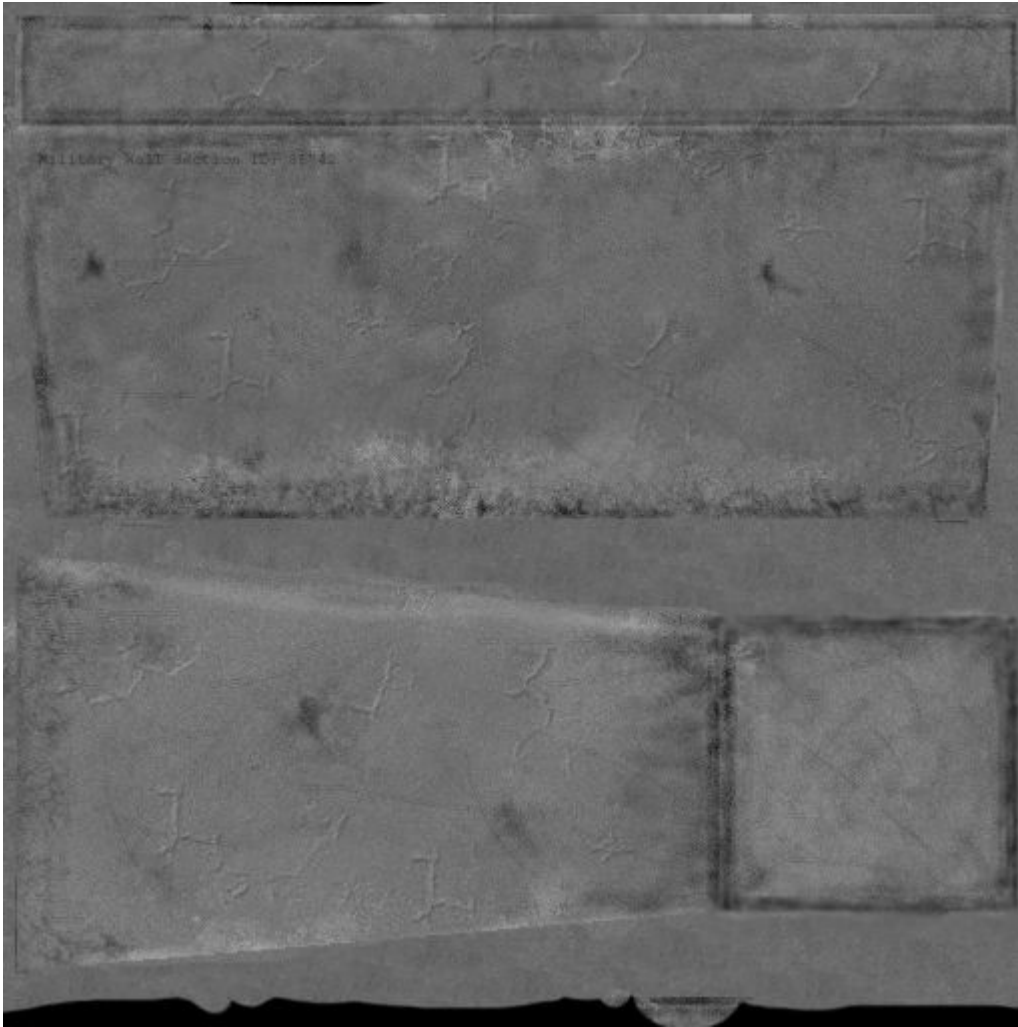
### File Attachments

---

1) [Wall Section.jpg](#), downloaded 277 times



2) [ren\\_wall.jpg](#), downloaded 283 times



3) [Tiberian Dawn Wall Section.rar](#), downloaded 67 times

---

---

Subject: Re: Tiberian dawn Wall Section  
Posted by [JeepRubi](#) on Mon, 30 Jan 2006 12:56:21 GMT  
[View Forum Message](#) <> [Reply to Message](#)

---

You shoul make the wall and pillar thype thing seperate,then it will fit together more easily.

---

---

Subject: Re: Tiberian dawn Wall Section  
Posted by [BlazeDragon](#) on Mon, 30 Jan 2006 13:13:22 GMT  
[View Forum Message](#) <> [Reply to Message](#)

---

Can't think of a use for this at the moment...maybe I'll find one later,and possibly use it

---