
Subject: Night regulator help

Posted by [Spetz5](#) on Sun, 29 Jan 2006 04:29:52 GMT

[View Forum Message](#) <> [Reply to Message](#)

Hi, I'm wondering if anyone can help me with a problem I have.

I can't seem to get Night Regulator to work, it will connect to my FDS, but will not do anything, like say stuff in-game. I figured I needed to hook it up to IRC, but I don't know how, can anyone help me with these problems?

Subject: Re: Night regulator help

Posted by [Nightma12](#) on Sun, 29 Jan 2006 10:29:47 GMT

[View Forum Message](#) <> [Reply to Message](#)

u do relize we have a support forum dont u?

take a screenshot of your FDS Settings tab plz

Subject: Re: Night regulator help

Posted by [Spetz5](#) on Sun, 29 Jan 2006 18:50:01 GMT

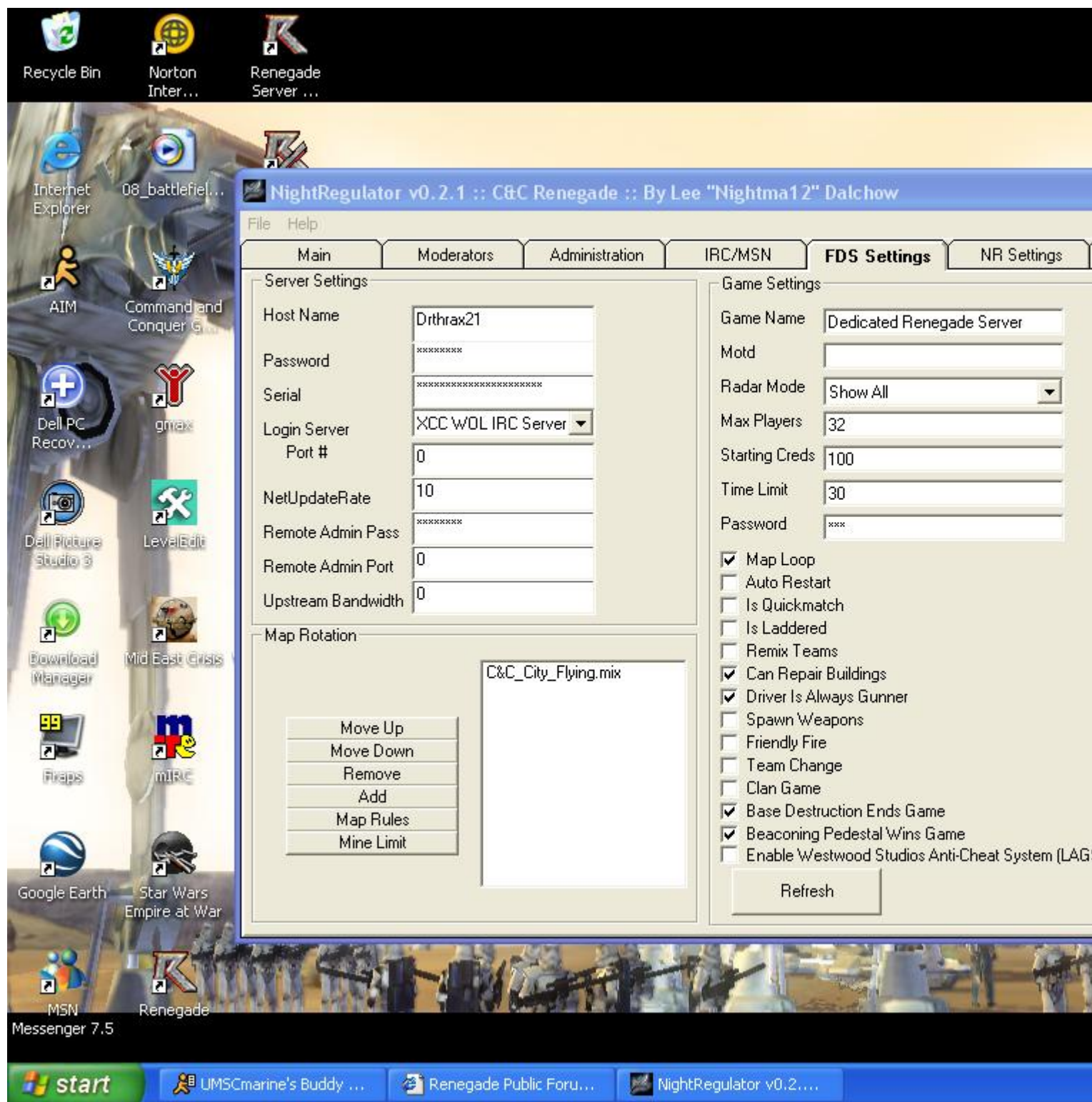
[View Forum Message](#) <> [Reply to Message](#)

No, I didn't relize you had a support forum, I've only used Night regulator once before, and it was a friend who helped me set it up, but he quit Renegade so I have no help with it.
Here is the Screen shot of my FDS settings

My main problem is setting up the IRC settings, the bot itself connects to the FDS, but will not say anything in-game, nor will it kick
Does Night Regulator need to be connected to IRC to be able to do stuff in the game, such as auto rotate text?

File Attachments

1) [FDS settings.JPG](#), downloaded 395 times



Subject: Re: Night regulator help
 Posted by [Nightma12](#) on Mon, 30 Jan 2006 17:55:25 GMT
[View Forum Message](#) <> [Reply to Message](#)

no, it does not have to be connected to IRC

set your Remote Admin Port to something other than 0

Subject: Re: Night regulator help

Posted by [Spetz5](#) on Mon, 30 Jan 2006 20:19:45 GMT

[View Forum Message](#) <> [Reply to Message](#)

ok it worked now, thanks nightma12 for your help, and i appologize for any inconvenience
