
Subject: xfire

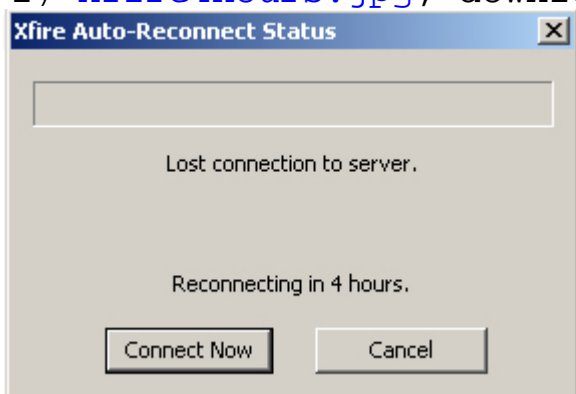
Posted by [Dave Mason](#) on Fri, 27 Jan 2006 22:30:06 GMT

[View Forum Message](#) <> [Reply to Message](#)

Out of curiosity, does anybody else's xfire do this when it's loses connection?

File Attachments

1) [xfire4hours.jpg](#), downloaded 273 times



Subject: Re: xfire

Posted by [cmatt42](#) on Sat, 28 Jan 2006 00:36:24 GMT

[View Forum Message](#) <> [Reply to Message](#)

Yes. Whenever it loses its connection, it tries to reconnect in about a minute, and each time it can't connect after that time, it tries again in a longer amount of time.
