
Subject: Server on WOL

Posted by [Parad0x](#) on Wed, 10 Aug 2005 19:32:49 GMT

[View Forum Message](#) <> [Reply to Message](#)

I am renting a dedi pc on which i am hosting servers on gamespy, but when it comes to WOL it just doesnt want to work...

I have checked and double checked the ports it uses and they are the same, i booted up a server for GSA with the ports i wanted to use for the WOL server and it was able to display and work perfectly on gamespy.

I have tested hosting on WOL on my own pc with all 3 of the serials i have and i am able to do it no problem

I have tried 3 different serials along with different login names for WOL and it just doesnt want to work, It boots the FDS then shuts it down straight away, and in the renlog file it just says:

```
[20:29:59] *** Auto starting game. Type 'quit' to abort ***
```

```
[20:29:59] Initializing Westwood Online Mode
```

Each time i try to boot the server it just adds that onto the renlog expect it has a different time.

I am totaly lost as to what the problem actually is because i've tried everything that i know of to get it to work...

Subject: Re: Server on WOL

Posted by [Cat998](#) on Thu, 11 Aug 2005 06:17:54 GMT

[View Forum Message](#) <> [Reply to Message](#)

Tried reinstalling it ?

Subject: Re: Server on WOL

Posted by [Nightma12](#) on Thu, 11 Aug 2005 07:21:32 GMT

[View Forum Message](#) <> [Reply to Message](#)

sounds to me that u are missing westwood shared internet componants?

Subject: Re: Server on WOL

Posted by [Parad0x](#) on Thu, 11 Aug 2005 09:07:35 GMT

[View Forum Message](#) <> [Reply to Message](#)

Yes i've tried re-installing at least 10 times now, still no luck.

The shared internet components were installed when the server was installed.

edit

After an hour of re-installing messing around with ports and what not i managed to get it to attempt logging into wol, but then i get this:

```
[10:19:51] *** Auto starting game. Type 'quit' to abort ***  
[10:19:51] Initializing Westwood Online Mode  
[10:19:52] Got server list  
[10:19:52] Logging onto USA Server  
[10:20:03] Error - Your serial number appears to be invalid.  
[10:20:03] Failed to log in, retrying
```

Each of my serials say the same thing even though they are authentic and were from the serial server until it stopped giving them...

Subject: Re: Server on WOL
Posted by [SODPaddy](#) on Thu, 11 Aug 2005 10:35:18 GMT
[View Forum Message](#) <> [Reply to Message](#)

you need a right serialnumber

Subject: Re: Server on WOL
Posted by [Parad0x](#) on Thu, 11 Aug 2005 11:18:12 GMT
[View Forum Message](#) <> [Reply to Message](#)

they are real from the EA serial generater thing before it stopped giving them out as i said above...

Subject: Re: Server on WOL
Posted by [zunnie](#) on Fri, 12 Aug 2005 08:36:11 GMT
[View Forum Message](#) <> [Reply to Message](#)

Weird, no idea about this one.
I think you'll have to host on GSA until you get a new serial to host on WOL.

Subject: Re: Server on WOL
Posted by [Parad0x](#) on Fri, 12 Aug 2005 12:08:09 GMT
[View Forum Message](#) <> [Reply to Message](#)

The thing is, i've tried all 3 serials hosting from my own pc and they work fine

Subject: Re: Server on WOL

Posted by [zunnie](#) on Fri, 12 Aug 2005 16:47:05 GMT

[View Forum Message](#) <> [Reply to Message](#)

My guess would be that you dont have a proper DNS server entry in your IP config.

Ask your host which one to use.

Alternatively:

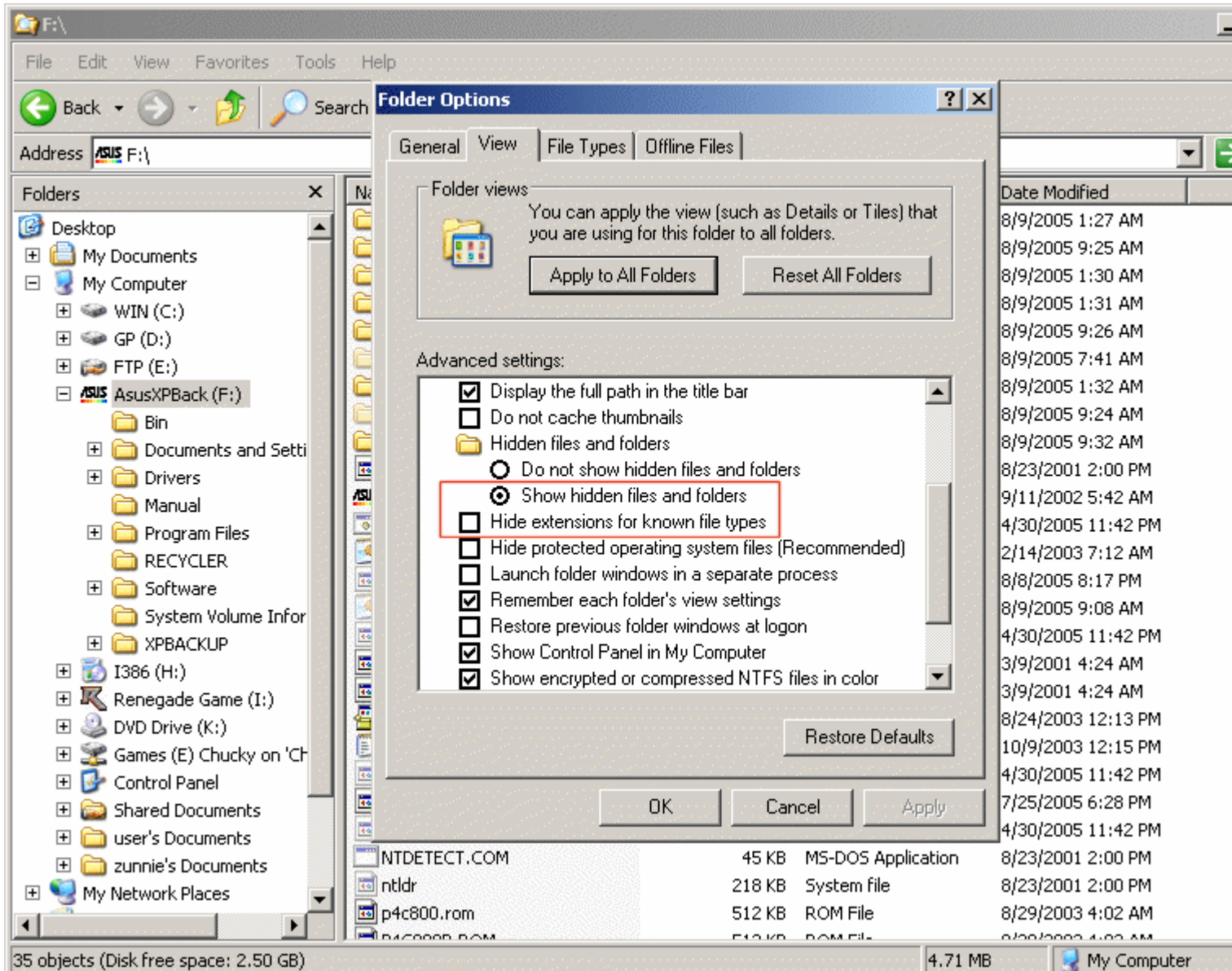
Open the hosts file located in C:\Windows\System32\drivers\etc\
and at the bottom add the line:

```
159.153.208.23  renchat4.westwood.com
```

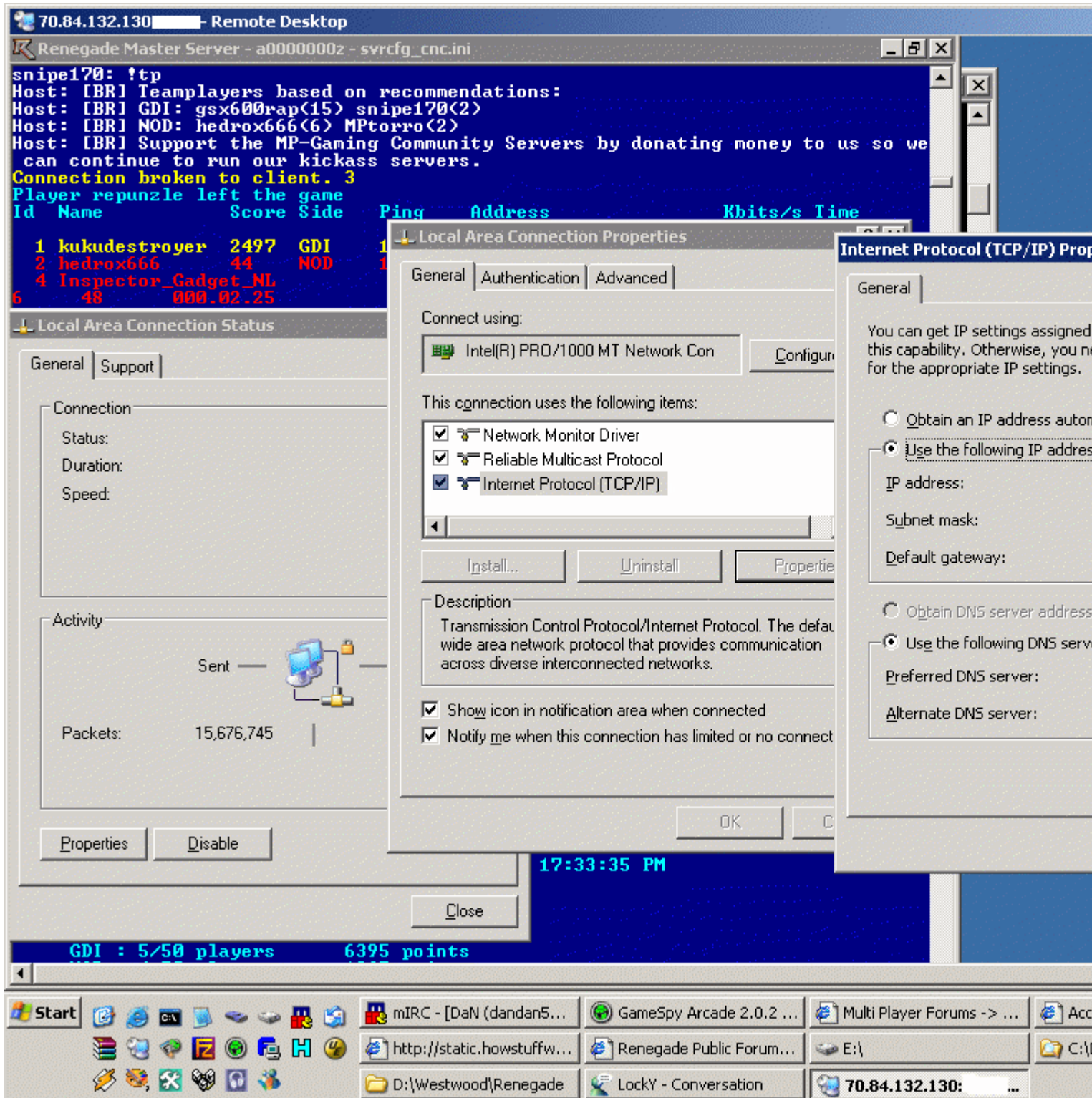
Save the file and restart the renegade server.

File Attachments

1) [hideextensionsknownfiletypes.gif](#), downloaded 367 times



2) [dnsserver.gif](#), downloaded 357 times



Subject: Re: Server on WOL

Posted by [danpaul88](#) on Sun, 14 Aug 2005 15:33:52 GMT

[View Forum Message](#) <> [Reply to Message](#)

I am having the same problem all of a sudden...

My server works in LAN mode (ruling out problems with the svrcfg_cnc.ini file) but in WOL mode it does the same as stated in the first post.

I tried adding the line to the hosts file, but it had no effect.

I have hosted an fds server on this computer before with no problems, and all ports are open as they should be.

I am using a fresh install of the RenFDS with Brenbot 1.41 installed on top, on a Windows XP Pro SP2 machine. I deleted the old FDS folder (after running the uninstall program) before installing again.
