

---

Subject: Re: RA\_Fjord

Posted by [Gen\\_Blacky](#) on Thu, 26 May 2011 16:43:22 GMT

[View Forum Message](#) <> [Reply to Message](#)

---

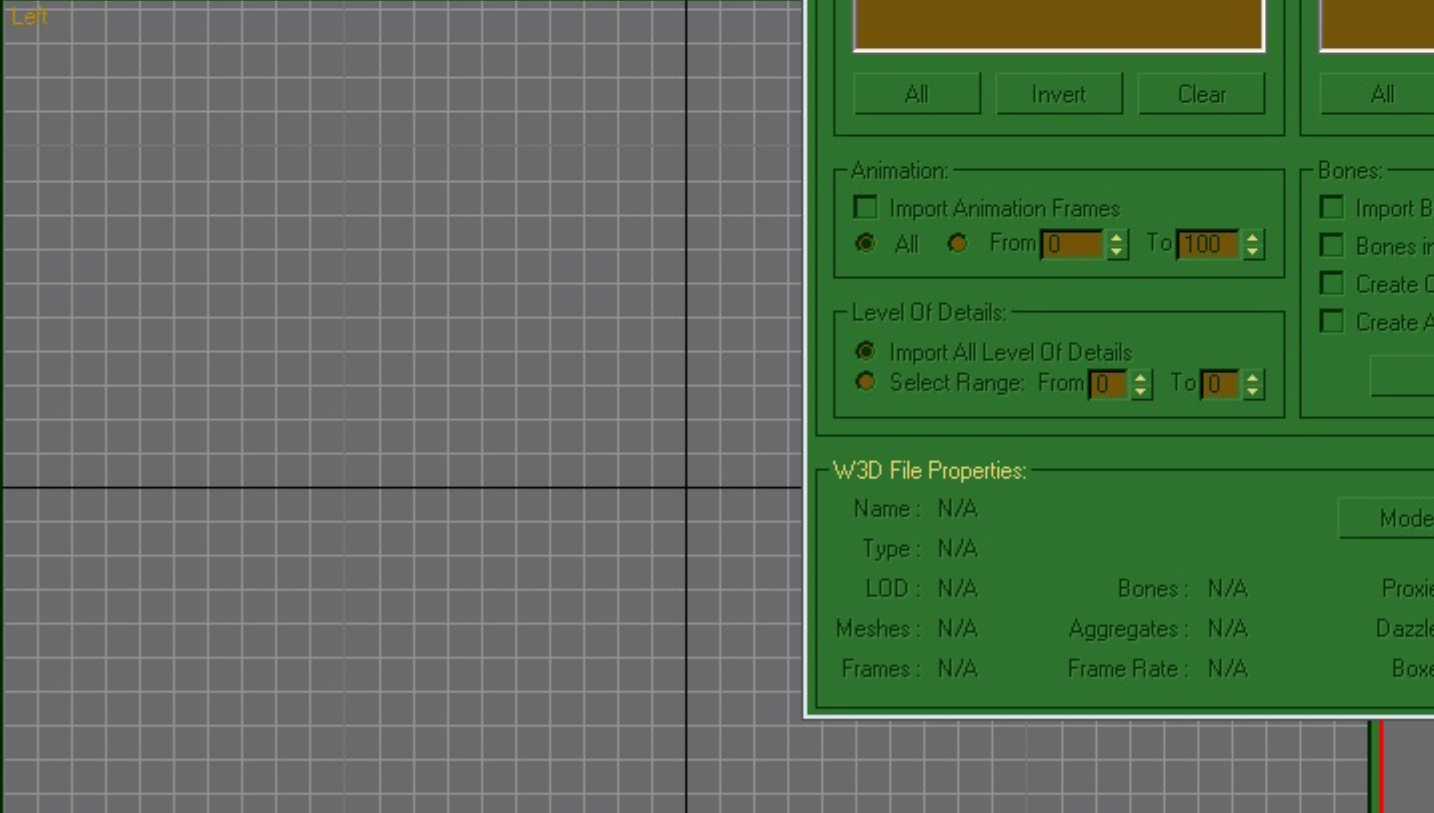
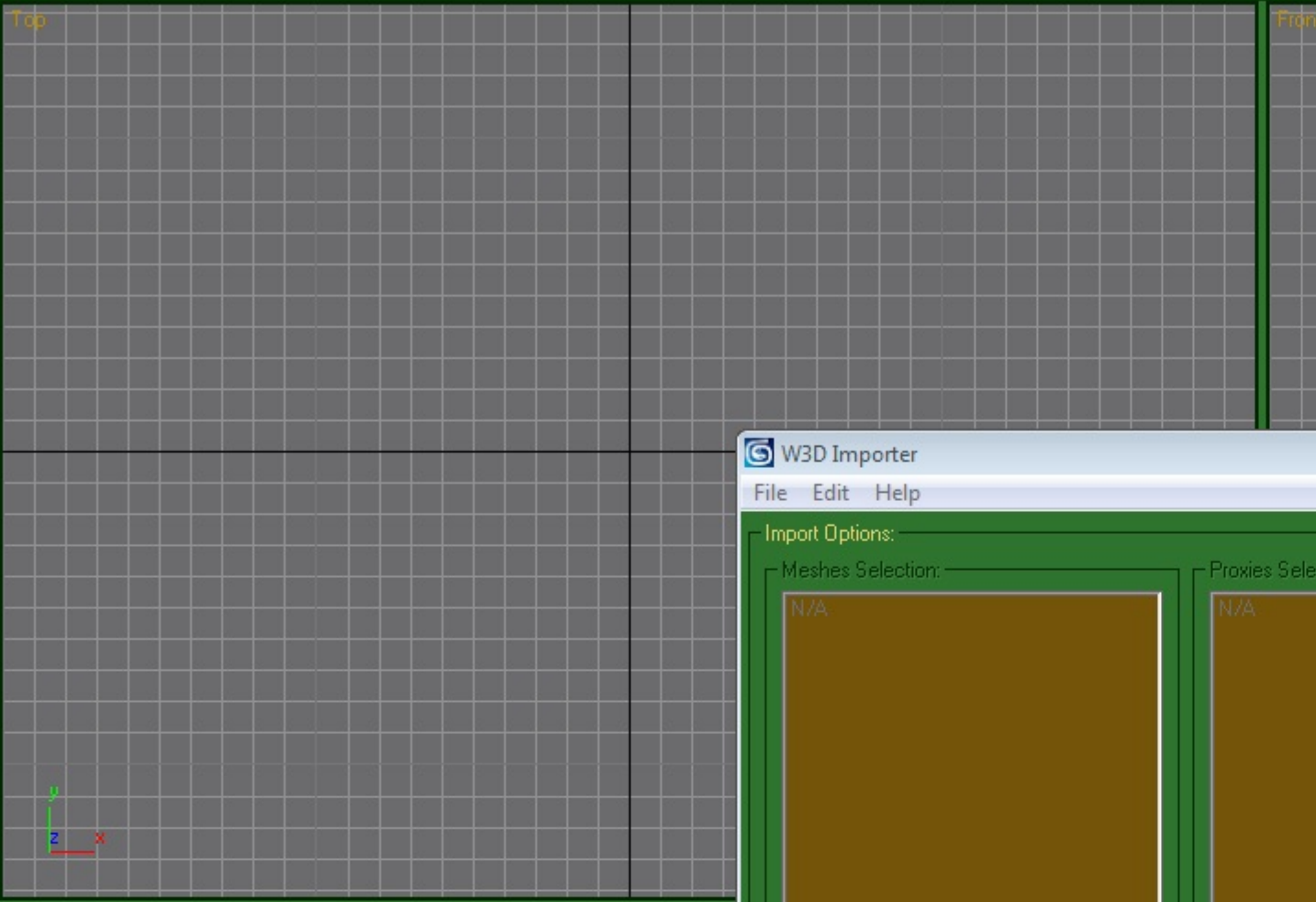
Renx w3d importer will work in 3ds max 8 or 9 got it working in both. I'm using 3dsmax 8 with the renx pack. What version are you using the newest version 2012 or something.

---

### File Attachments

1) [3dsmax.jpg](#), downloaded 1102 times

---



### W3D Importer

File Edit Help

**Import Options:**

**Meshes Selection:**

N/A

All Invert Clear

**Proxies Selection:**

N/A

All

**Animation:**

Import Animation Frames

All  From 0 To 100

**Level Of Details:**

Import All Level Of Details

Select Range: From 0 To 0

**Bones:**

Import Bones

Bones in

Create O

Create A

**W3D File Properties:**

Name: N/A	Model	
Type: N/A		
LOD: N/A	Bones: N/A	Proxies
Meshes: N/A	Aggregates: N/A	Dazzle
Frames: N/A	Frame Rate: N/A	Boxes