

---

Subject: Re: Scrin's Bloom n' Shaders  
Posted by [CarrierII](#) on Wed, 15 Jul 2009 10:26:18 GMT  
[View Forum Message](#) <> [Reply to Message](#)

---

Nice idea, but snow maps, such as C&C\_Alpine...  
OWWW, MY EYES!

I think that speaks for itself.

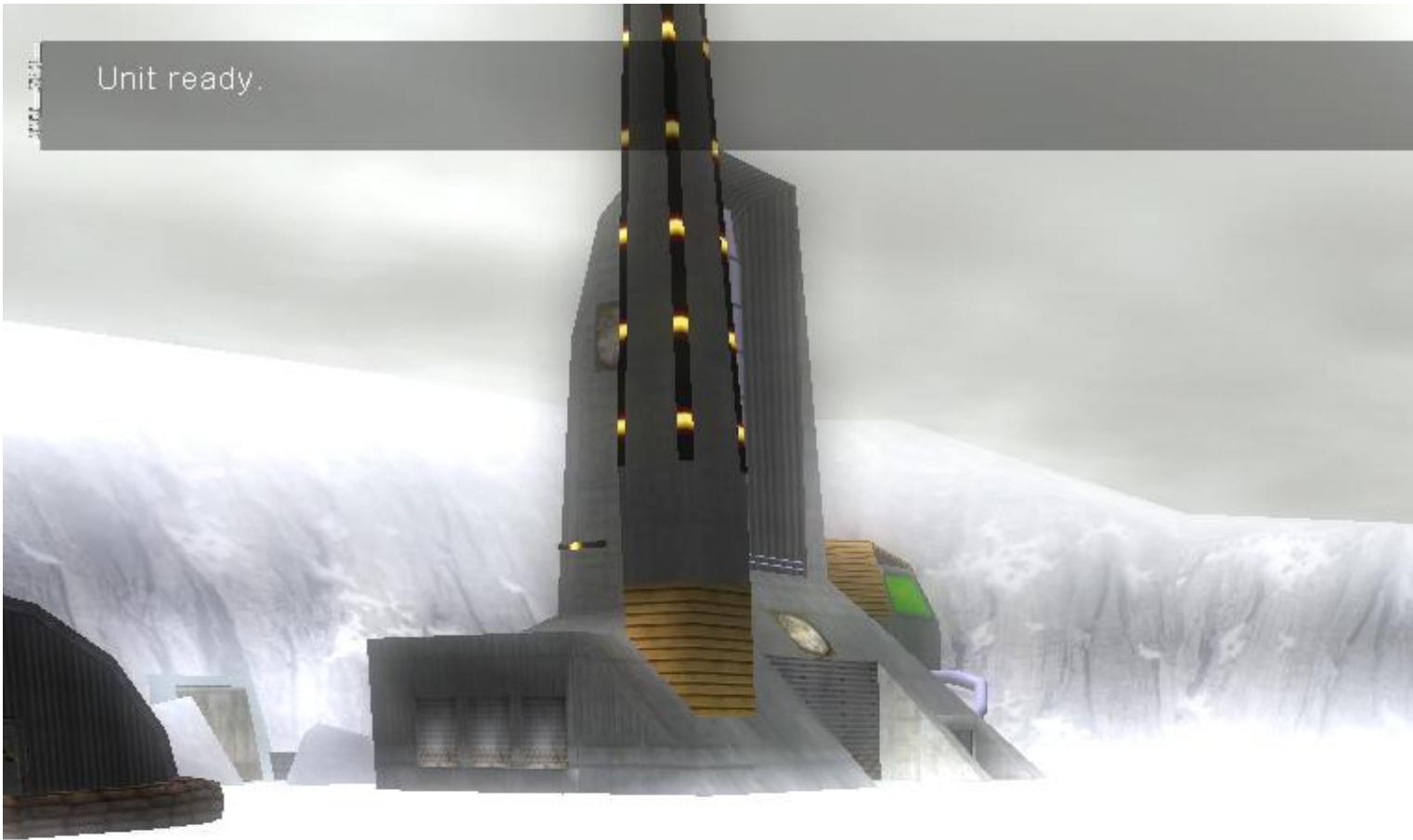
---

### File Attachments

1) [NeedsLESSBloom.jpg](#), downloaded 833 times

---

Unit ready.



Carrier II



Credits:  
Time Rem