

---

Subject: Re: C&C Reborn : Infantry Maps?  
Posted by [crazfulla](#) on Sun, 06 Jan 2008 03:36:09 GMT  
[View Forum Message](#) <> [Reply to Message](#)

---

Scrin wrote on Sat, 05 January 2008 10:54zilla  
eh?

Mad Ivan wrote on Sat, 05 January 2008 10:54Yeah, i could whip something up as well.

crazfulla wrote on Sat, 05 January 2008 17:38Some low poly buildings would be nice so I know how large the base needs to be.

I asked for those last summer or something like that  
I shall post on the reb forum about it.

Anyways I managed to salvage some work off my old computer which is on its death bed...

A map for normal renegade but included some reb units and somthing else never before seen (I can't tell as I may yet finish it):

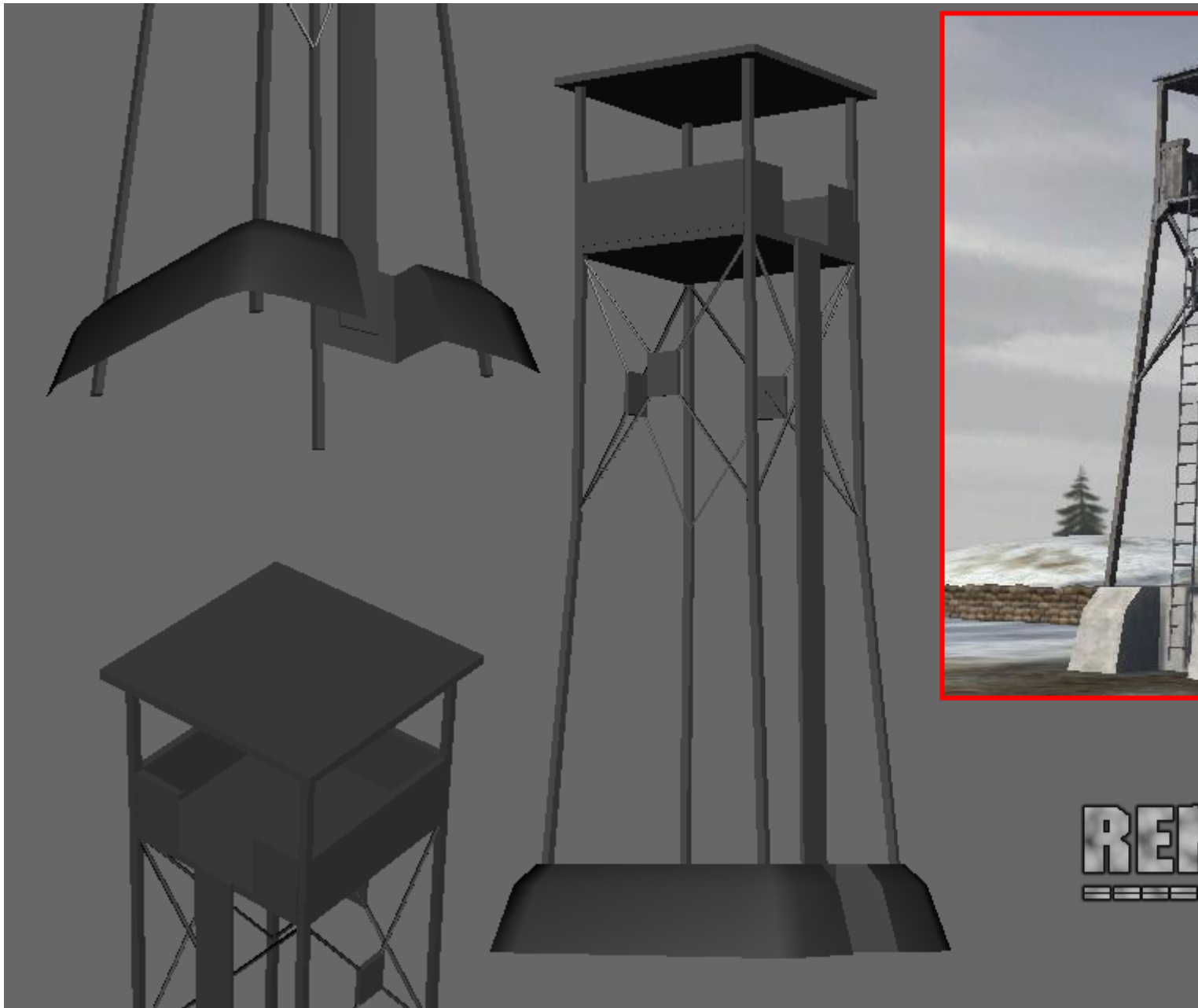
Also some R1942 stuff, this was modelled from the Battlefield screenie in the top right (it is now fully textured):

---

### File Attachments

1) [r1942\\_wip\\_tower.PNG](#), downloaded 319 times

---



2) [C&C\\_Dunes.JPG](#), downloaded 504 times

