
Subject: Re: Beacon Pedestal

Posted by [Jerad2142](#) on Mon, 10 Sep 2007 12:49:28 GMT

[View Forum Message](#) <> [Reply to Message](#)

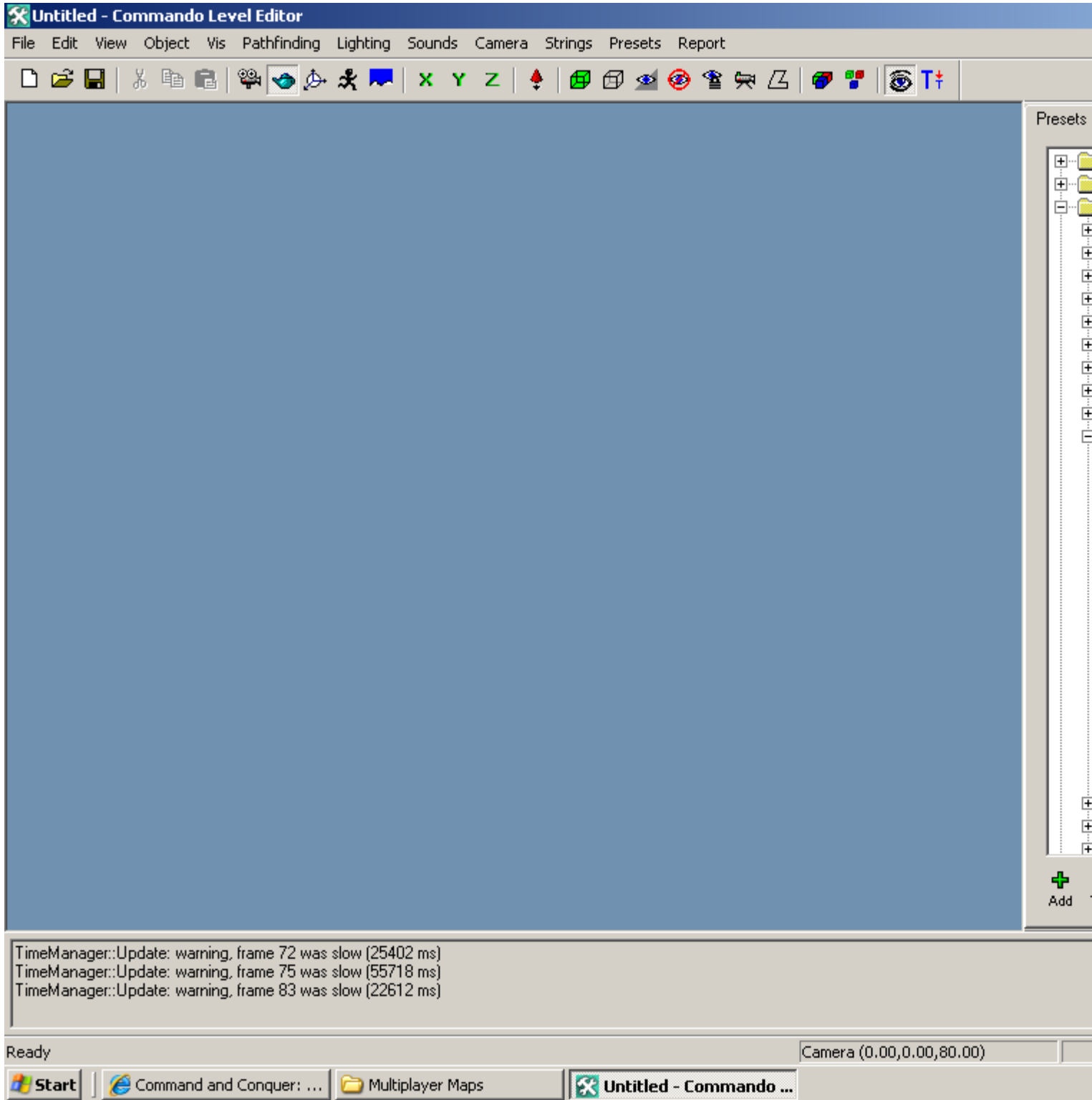
The beacon zone:

GDI pedestal (gold):

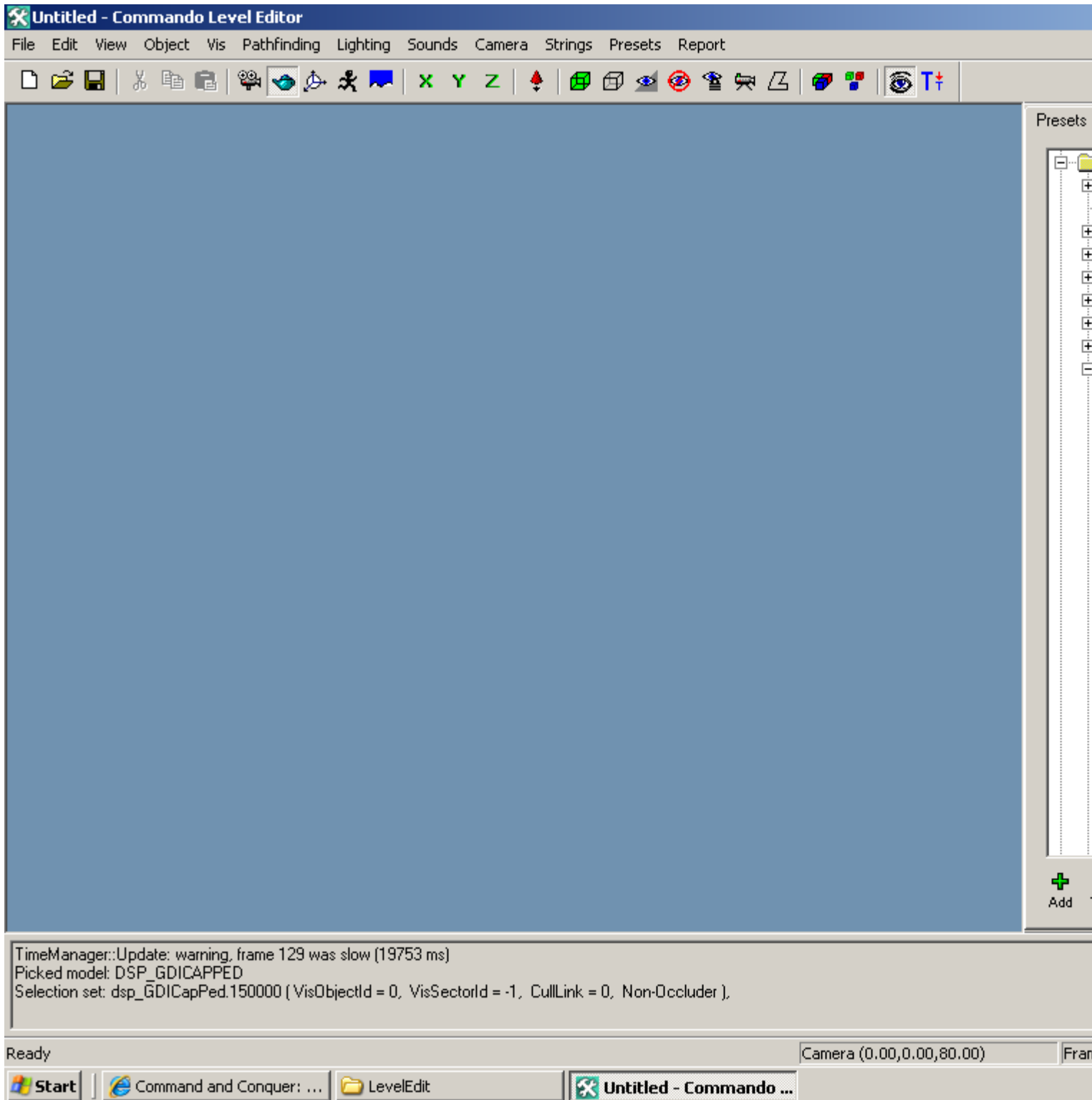
Nod pedestal (black/red):

File Attachments

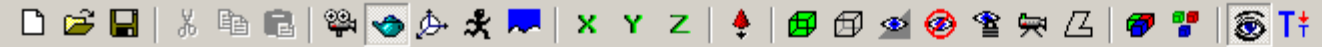
1) [beacon zone name.png](#), downloaded 146 times



2) [GDI Ped.png](#), downloaded 146 times



3) [Nod ped.png](#), downloaded 148 times



TimeManager::Update: warning, frame 215 was slow (7269 ms)
Picked model: DSP_NODCAPPED
Selection set: dsp_NodCapPed.150001 (VisObjectId = 0, VisSectorId = -1, CullLink = 0, Non-Occluder).

Ready

Camera (0.00,0.00,10.70)

