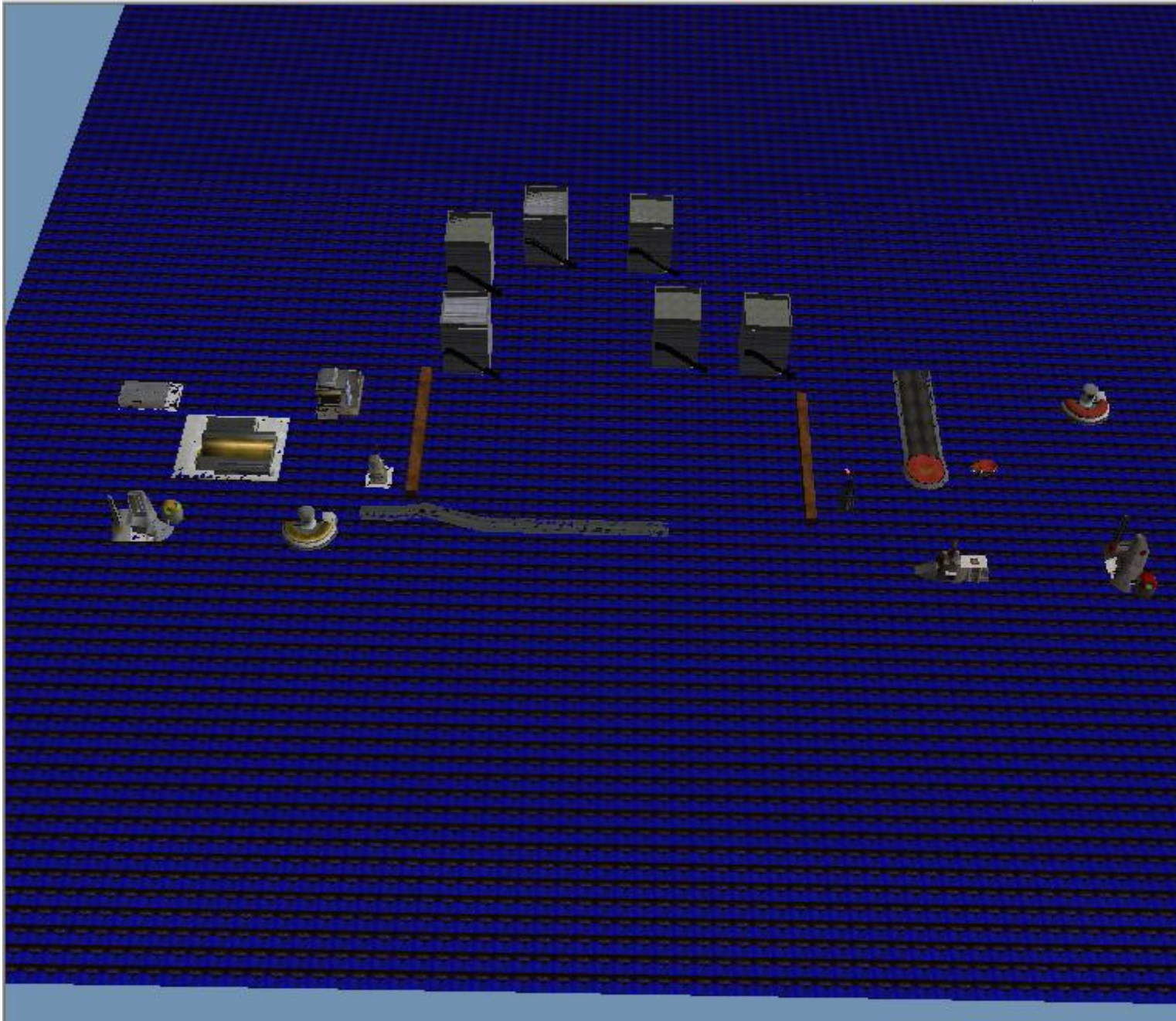
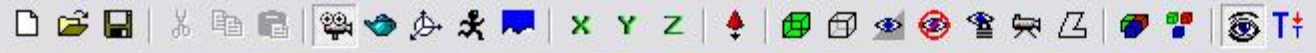

Subject: Re: C&C_Lost_Base.mix
Posted by [Darknes2](#) on Sun, 19 Aug 2007 18:20:21 GMT
[View Forum Message](#) <> [Reply to Message](#)

lost base has to many problems so im working on something ooler heres a s.s of what i have so far.

it will be named C&C_Fortification.mix

File Attachments

1) [S.S of new map.JPG](#), downloaded 367 times



Invalid TGA format used in C:\Westwood\RenegadePublicTools\LevelEdit\experiments\tiles\building aggregates - multiplayer\mp - nod air tower\atr_pct_master.tga
Invalid texture size, scaling required. Texture: C:\Westwood\RenegadePublicTools\LevelEdit\experiments\terrain\building interior tiles_multiplay\mp - hand of no
Invalid TGA format used in C:\Westwood\RenegadePublicTools\LevelEdit\experiments\tiles\building aggregates - multiplayer\mp - gdi barracks\bar_pct_master.tga

