

---

Subject: Skinning..

Posted by [Ryu](#) on Sat, 04 Aug 2007 05:00:05 GMT

[View Forum Message](#) <> [Reply to Message](#)

---

Hey,

Every time I edit a vehicles or buildings, And use these settings it works fine, Every time I try to export a character skin using these settings, It's a complete fail, Does anyone know the options I need to use to export a character skin?

Here's the settings I'm using..

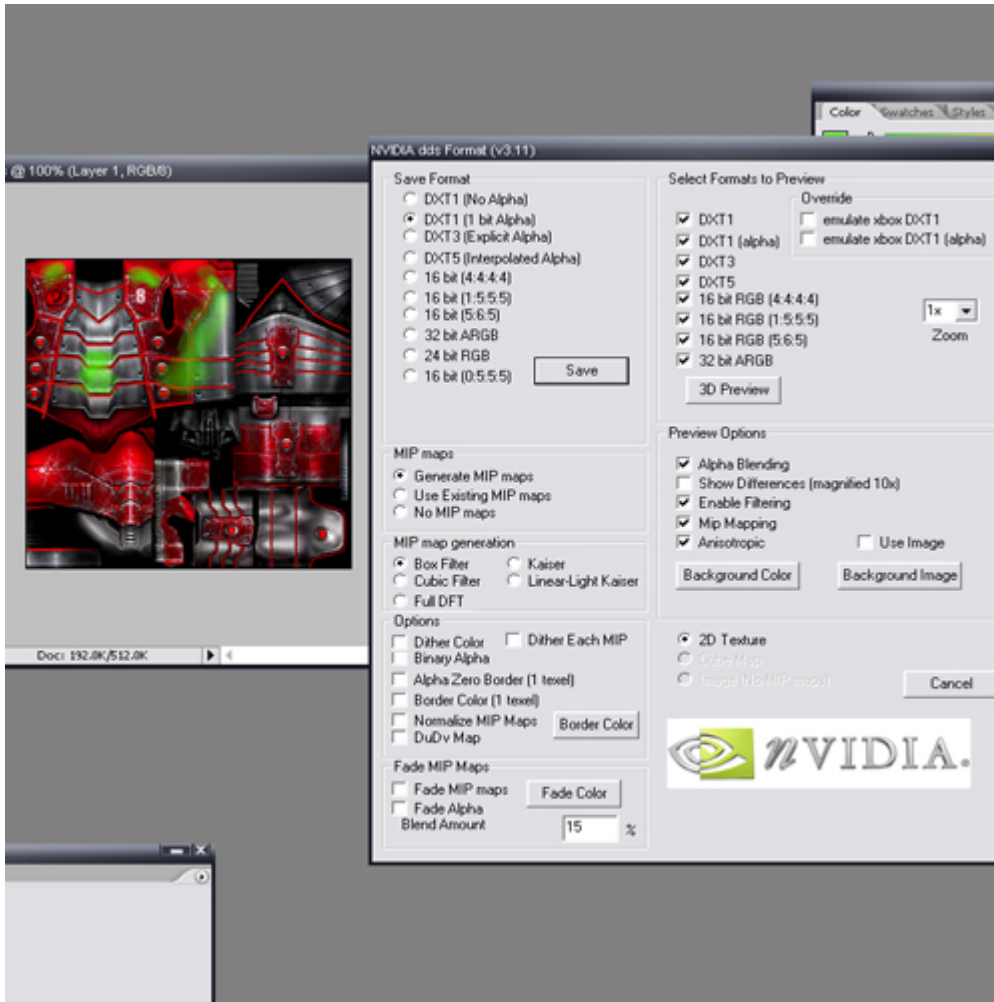
And here's the outcome:

ARG!! Can someone point out what I'm doing wrong please? Them settings work perfectly with Building textures and Vehicles!

#### File Attachments

---

1) [Help1.jpg](#), downloaded 275 times



2) [Helpme2.jpg](#), downloaded 273 times

