

---

Subject: Re: mapping help

Posted by [RaptorA](#) on Wed, 08 Mar 2006 18:48:30 GMT

[View Forum Message](#) <> [Reply to Message](#)

---

ill check out renhelp but a lot of the time i get the 404 error.

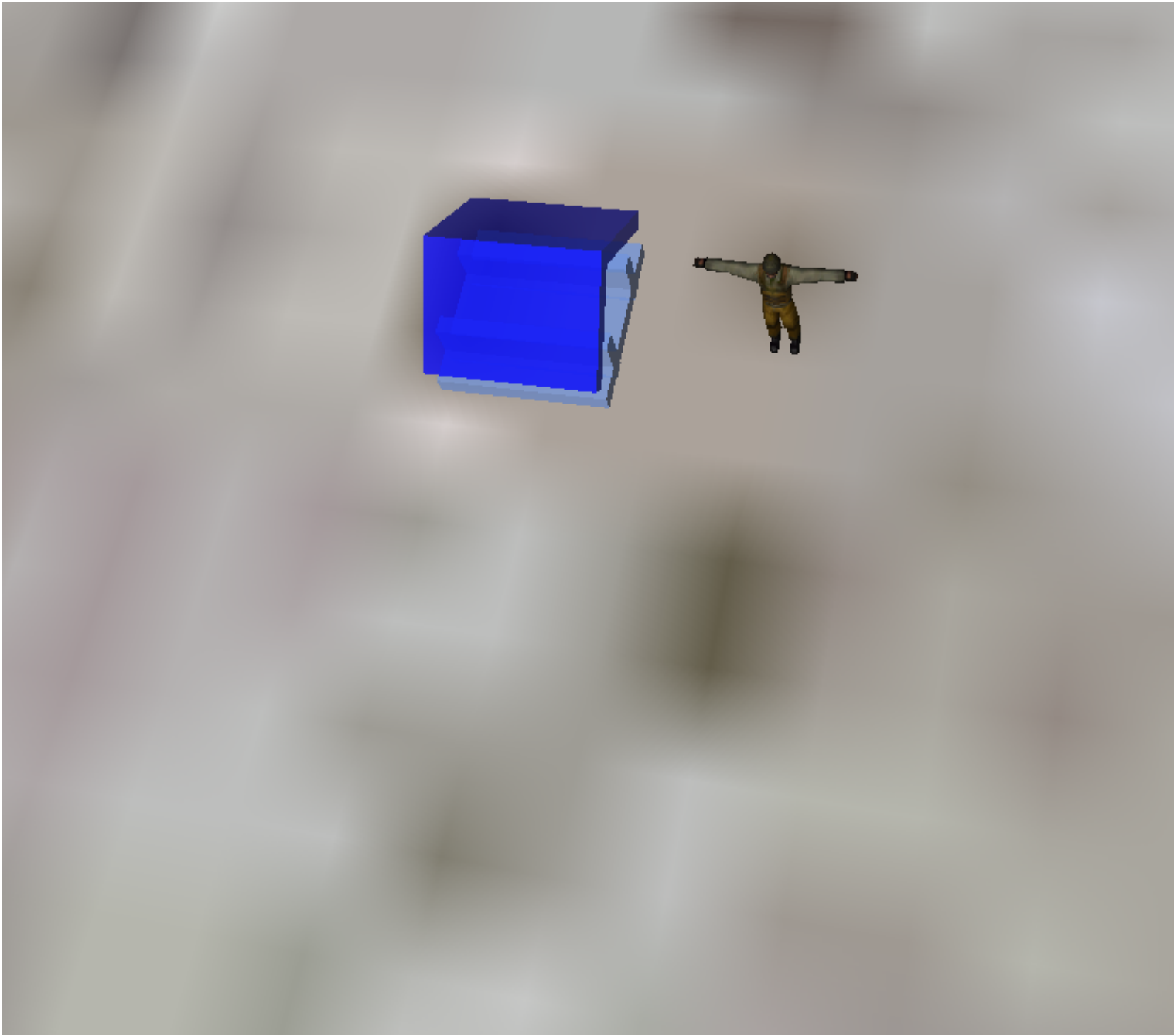
(part 1, addin buildings) ok iv tryed wt u sed with renx / proxis and when i go to try the map the building dont show, but when in level edit its show that blue # with a roof and the spawner but thats it, how i get them into the map ingame?

just to add in when on leve editor and u zoom out how do u get it to make the terrain vewable at a grater distenc i did it the other day but iv 4got

#### File Attachments

---

1) [LevelEdit 2006-03-08 20-15-15-51.png](#), downloaded 299 times



2) [game2 2006-03-08 20-14-56-75.png](#), downloaded 298 times

